

SPREADERS



SALTDogg[®]

by **Buyers**

2011-2012

FULL LINE



WALK BEHINDS



TAILGATE SPREADERS



V BOX SPREADERS



MUNICIPAL SPREADERS

TABLE OF CONTENTS

WALK BEHIND SPREADERS	3	6, 7, 8, 9 CU.YD. MUNICIPAL HYDRAULIC DRIVE SALT & SAND SPREADERS (CONVEYOR DRIVEN)	18
WB100B & WB200B (polymer)		9' 1450657SSH (stainless steel)	
WB400 (polymer)		9' 1425657SSH (stainless steel)	
TAILGATE SPREADERS	4-8	9' 1406657SSH (stainless steel)	
TGSUV1B (polymer)		10' 1450757SSH (stainless steel)	
TGSUVPROA (polymer)		10' 1425757SSH (stainless steel)	
TGS01B (polymer)		10' 1406757SSH (stainless steel)	
TGS03 (polymer)		10' 1450863SSH (stainless steel)	
TGS05 (polymer)		10' 1425863SSH (stainless steel)	
TGS06 (polymer)		10' 140863SSH (stainless steel)	
TGS07 (polymer)		10' 1450969SSH (stainless steel)	
ELECTRIC DRIVE SALT & SAND SPREADERS	9-14	10' 1425969SSH (stainless steel)	
5'5" SHPE075 SERIES (polymer)		10' 140969SSH (stainless steel)	
7'8" SHPE1500 SERIES (polymer)		10-16 CU.YD. MUNICIPAL HYDRAULIC DRIVE SALT & SAND SPREADERS (CONVEYOR DRIVEN)	19
8' SHPE2000 SERIES (polymer)		12' 1451057SSH (stainless steel)	
8' SHPE2250 (polymer)		12' 1421057SSH (stainless steel)	
8'6" SHPE3000 (polymer)		12' 1461057SSH (stainless steel)	
8'4" SHPE4000 (polymer)		12' 1451163SSH (stainless steel)	
10'7" SHPE6000 (polymer)		12' 1421163SSH (stainless steel)	
8' 1400601SS (stainless steel)		12' 1461163SSH (stainless steel)	
6' 1400701SS (stainless steel)		12' 1451369SSH (stainless steel)	
GAS DRIVE SALT & SAND SPREADERS	15	12' 1421369SSH (stainless steel)	
6' SCH072SS & 1400200SS KIT (stainless steel)		12' 1461369SSH (stainless steel)	
6' SCH072SSX & 1400250SS KIT (stainless steel)		14' 1451257SSH (stainless steel)	
8' SCH096C & 1400050 KIT (carbon steel)		14' 1421257SSH (stainless steel)	
8' SCH096SS & 1400050SS KIT (stainless steel)		14' 1461257SSH (stainless steel)	
8' SCH096CX & 1400100 KIT (carbon steel)		14' 1451363SSH (stainless steel)	
8' SCH096SSX & 1400100SS KIT (stainless steel)		14' 1421363SSH (stainless steel)	
8' 1400400 KIT (polymer)		14' 1461363SSH (stainless steel)	
8' 1400450 KIT (polymer)		14' 1451469SSH (stainless steel)	
10' SCH120SS & 1400300SS KIT (stainless steel)		14' 1421469SSH (stainless steel)	
10' SCH120SSX & 1400350SS KIT (stainless steel)		14' 1461469SSH (stainless steel)	
3.5, 4, 4.5 CU.YD. MUNICIPAL GAS OR HYDRAULIC DRIVE SALT & SAND SPREADERS (CONVEYOR DRIVEN)	16	UNDER TAILGATE SPREADERS	20
8' 1400475SS (stainless steel)		92440SSA (stainless steel, electric)	
8' 1400475SSH (stainless steel)		92420A (carbon steel)	
9' 1400500SS (stainless steel)		92420SSA (stainless steel)	
9' 1400500SSH (stainless steel)		92425SSA (stainless steel)	
10' 1400550SS (stainless steel)		92430A (carbon steel)	
10' 1400550SSH (stainless steel)		92430SSA (stainless steel)	
6, 7, 8 CU.YD. MUNICIPAL HYDRAULIC DRIVE SALT & SAND SPREADERS (AUGER DRIVEN)	17	REPLACEMENT TAILGATE SPREADERS	21
10' 1471056SSH (stainless steel)		9035000 (stainless steel)	
11' 1471156SSH (stainless steel)		5535000 (stainless steel)	
12' 1471256SSH (stainless steel)		LIQUID SPRAY SYSTEMS	22-23
		ACCESSORIES	24
		HOW TO LOCATE REPLACEMENT PARTS	25
		SPECIFICATION CHART	26-31

WALK BEHINDS

WB100B, WB200B & WB400

Professional grade walk-behind spreaders are available with carbon steel or stainless steel framework. Ideal for commercial/residential use.



WB100B & WB200B

- One-piece fully-welded frame.
- Large 1.5 cu. ft. polymer hopper.
- Cap.: 100 lbs. of bagged salt, or other free flowing materials.
- Large 13" pneumatic tires.
- Large flow regulator offers ease of operation.
- Solid control linkage eliminates sticking and stretched cables.
- 3-flap adjustable poly deflector controls spread pattern (ideal for sidewalks, near sensitive foliage, etc.). Additional fixed rear deflector protects operator's feet.
- Ergonomic handle.
- Expanded metal hopper screen helps prevent material jamming.
- Includes a durable, double-stitched plastic rain cover to protect from moisture and spillage.
- Heavy-duty stainless steel gears for added strength.
- Restrictor plate designed for durability.
- Individually boxed for retail display.

WB400

- 2.5 cu. ft. heavy duty poly hopper with 200 lb. capacity. Black powder coated handles with rubber grips.
- 44" wide drop spreader is ideal for sidewalks and areas near sensitive foliage. Wide spread path drops material only where it is needed.
- 90% assembled.
- Stainless steel main frame, discharge, auger and shaft assembly.
- Nylon bushings for smooth action
- Large 13" pneumatic tires.
- Solid control linkage for discharge adjustment, and metal screen to prevent material jamming.
- Includes a durable, double-stitched plastic rain cover to protect from moisture and spillage.
- Individually boxed for retail display.



SUV TAILGATE SPREADERS

TGSUV1B & TGSUVPROA

Ideal for the home owner/residential user (TGSUV1B)

Ideal for residential/light commercial applications (TGSUVPROA)

TGSUV1B – Residential Use

- Capacity: 4.4 cu. ft. #1 rock salt or similar free-flowing dry material. Heavy-duty 12-volt sealed motor. Wire harness includes cigarette plug adapter.
- Rugged thermoplastic black hopper
- Folds away for easy access to rear door or tailgate.
- Material flow up to 12' to 14' controlled from a manual, stainless steel open/close gate and an in-cab on-off control.
- Complete with all mounting hardware for 1-1/4" & 2" receiver hitches.



3011864 – Variable speed controller
standard with TGSUVPROA, TGS01B,
TGS03, TGS05B, TGS06, TGS07

TGSUVPROA – Light Commercial Use

- Capacity: 4.4 cu. ft. #1 rock salt or similar free-flowing dry material. Heavy-duty sealed ball bearing motor with variable speed controller.
- Rugged thermoplastic black hopper
- Folds away for easy access to rear door or tailgate.
- Material flow up to 30' controlled from an in-cab variable speed control.
- Ultra-smooth hopper interior and auger help prevent material bridging
- Complete with all mounting hardware for 2" receiver hitches.
- Prewired for optional Vibrator Kit (Part No. 3008241)



TGSUVPROA

TAILGATE SPREADERS

TGS03 NEW

The **NEW** TGS03 combines the robustness of an auger-driven V-Box spreader with the simplicity and easy mounting of a tailgate spreader. The open-auger design gives contractors the option to spread a variety of materials*, typically limited to V-Box spreaders.

TGS03

- Capacity: 8 cu. ft.
- 2" Receiver Hitch Mounting with Horizontal & Vertical Adjustment, no bed rail drilling (patent pending)
- 12-Volt DC Dual Shaft Gear Motor (patent pending), .4 HP
- 12" Polymer Spinner
- Horizontal Auger Feed Mechanism
- Variable Speed Controller with Vibrator Switch
- 3ft. - 30ft. Spread Width
- Polyethylene/Steel/Stainless Steel Construction
- Requires optional vibrator for salt/sand mix: Part # 3020340*

AVAILABLE OCTOBER 2011



3011864 - Variable speed controller
standard with TGSUVPROA, TGS01B,
TGS03, TGS05B, TGS06, TGS07



TGS03 Auger w/ Stainless Steel Trough



3020340 Optional Vibrator Shown Installed

NEW



TGS03



TAILGATE SPREADERS

TGS01B & TGS05B

The most cost-effective commercial grade spreader to maintain large commercial grounds. (TGS01B)
Features a low-profile design for unrestricted rear view & a protected internal motor assembly. (TGS05B)

TGS01B

- Capacity: 8 cu. ft. #1 rock salt or similar free-flowing dry material.
- Rugged black polymer hopper & orange powder coated steel mounting frame resist rust & corrosion.
- Heavy-duty 12-volt spreader motor.
- Material flow and spread width, from 3 feet to 30 feet are controlled from an in-cab electronic spreader control panel.
- Ultra-smooth hopper interior and auger design, enhances material flow and reduces material "bridging".



3011864 - Variable speed controller
standard with TGSUVPROA, TGS01B,
TGS05B, TGS06, TGS07

TGS05B

- Capacity: 10.79 cubic feet #1 rock salt or similar material
- Rugged black polymer hopper & orange powder coated steel mounting frame resist rust & corrosion.
- Heavy-duty 12-volt spreader motor is housed in a sealed chamber
- Material flow and spread width, from 3 feet to 30 feet are controlled from an in-cab electronic spreader control panel.
- Ultra-smooth hopper interior and auger design, enhances material flow and reduces material "bridging".

Mounting Options:

- Mount directly to the step bumper (standard, all mounting hardware included)
- Mount using the optional Wintergate Spreader Mount, allowing full bed access (Part No. 025000A).
- Mount using an optional receiver mount for a 2" receiver tube (Part No. 0207005).



TAILGATE SPREADERS

TGS06

Commercial grade salt spreader features a low-profile design for unrestricted rear view & a protected internal motor assembly.

TGS06

- Capacity: 10 cu. ft. #1 rock salt or similar material.
- Rotationally molded double-wall poly construction requires no steel framework.
- Heavy-duty 12-volt spreader motor is housed in a sealed motor chamber inside the hopper for extra protection.
- Concealed 80 lb. vibrator.
- Mounts to any 2" hitch receiver (includes universal stake pocket attachment).
- Hinged lid with self-latching handle eases loading.
- Molded-in hopper handles.
- Easy to use adjustable flow-gate design.
- Spread width, from 3' to 30' controlled from an in-cab electronic spreader control panel.
- Access panel provides easy maintenance
- Low-profile design for unobstructed rear view.
- Lighter weight unit for higher load capacity.



3011864 - Variable speed controller
standard with TGSUVPROA, TGS01B, TGS05B, TGS06, TGS07



TGS06



TAILGATE SPREADERS

TGS07

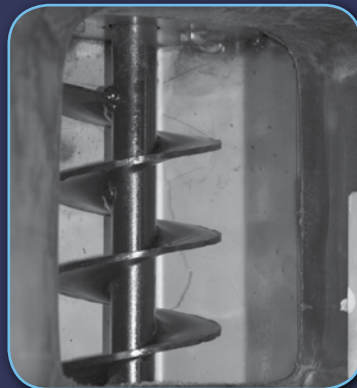
The TGS07 combines the robustness of an auger-driven V-Box spreader with the simplicity and easy mounting of a tailgate spreader. The open-auger design gives contractors the option to spread a variety of materials, typically limited to V-Box spreaders using salt/sand mixtures.

TGS07

- Capacity: 11 cu.ft.
- 2", Class 4 Receiver Hitch Mounting with Horizontal and Vertical Adjustment, no bed rail drilling (patent pending)
- 12-Volt DC Dual Shaft Gear Motor (patent pending), .4 HP
- 12" Polymer Spinner
- Horizontal Auger Feed Mechanism
- Variable Speed Controller with Vibrator Switch
- 3ft. - 30ft. Spread Width
- Polyethylene/Stainless Steel/Steel Construction
- 200 lb, concealed vibrator
- Dual action lid provides convenient loading from the ground or pick-up bed (patent pending)
- Vehicle Application: 3/4-Ton and 1-Ton Trucks



3011864 - Variable speed controller
standard with TGSUVPROA, TGS01B,
TGS03, TGS05B, TGS06, TGS07



TGS07 Auger



Standard Vibrator Shown



Patent Pending Mounting System



TGS07

ELECTRIC DRIVE SALT & SAND SPREADERS

SHPE0750, SHPE0750X, SHPE1500, & SHPE1500X

The SHPE Series SaltDogg® spreaders are completely self-contained, ultra-durable spreader units designed for ice and snow control & are available from 3/4 yard to 6 yard capacity. The complete assembly mounts easily on utility vehicles, pickups, dump, platform & utility trucks, making it ideal for municipalities, shopping malls, industries, hospitals & private contractors.

SHPE0750 Series & SHPE1500 Series

- **CAPACITY** – SHPE0750 Series: 0.75 cu.yds. (5'5"); SHPE1500 Series: 1.50 cu.yds. (7'8")
- **MATERIAL HOPPER** – Rotationally molded double-wall polymer unibody spreader with smooth angled walls help maximize material flow. Features integrated positive position mount system plus 4-piece ratchet tie-down kit. No drilling required. Molded fork slots in hoppers makes for easy one man installation & removal, requires extended fork, or lift from 4-point tie downs (Part No. 1496605).
- **AUGER** – 2.5" dia. screw-type stainless steel auger system travels the length of the hopper floor, providing maximum material flow at a continuous rate. An independent spinner/auger controller allows for both independent spinner speed and an infinitely adjustable ratio between spinner and auger.
- **MATERIAL FLOW/OUTPUT** – Salt, 2.2 cu. ft./minute; Salt/Sand, 1.3 cu. ft./minute. Spread width is variable from 5 to 30 feet.
- **SPINNER CHUTE ASSEMBLY** – A 12" polymer disc is connected to a 3/4" diameter stainless steel shaft. The spreading material is guided from the stainless steel trough to the spinner plate through an enclosed heavy-duty polymer chute and spinner assembly with an external deflector. The extra-wide adjustable deflector protects the vehicle and allows for complete directional spread control. A convenient spring-latch locking mechanism allows the spinner assembly to be removed for cleaning/storage. Extended chutes are available.
- **ELECTRIC MOTORS** – Two ultra-quiet 12-volt DC direct-drive motors, (.5 HP Auger Motor, .25 HP Spinner Motor), power the auger and spinner, and are encased in a heavy-duty poly housing along with vibrator. The wiring harness is constructed of 10-gauge automotive wire. An in-cab console features independent controls for the auger, spinner and vibrator.
- **STANDARD EQUIPMENT** – 1/4" black powder coated steel top screen. Heavy-duty poly-vinyl tarp with reinforced corners and tie-down kit. Heavy-duty 12 VDC vibrator, rated at 200 force pounds for maximum performance. Spreader hold-down kit.



SHPE0750



SHPE1500



SHPE0750 on Utility Vehicles



3014199 - Variable speed controller standard with SHPE0750 Series, SHPE1500 Series, SHPE2000 Series, and SHPE4000



ELECTRIC DRIVE SALT & SAND SPREADERS

SHPE2000, SHPE2000X

The SHPE Series SaltDogg® spreaders are completely self-contained, ultra-durable spreader units designed for ice and snow control & are available from 3/4 yard to 6 yard capacity. The complete assembly mounts easily on utility vehicles, pickups, dump, platform & utility trucks, making it ideal for municipalities, shopping malls, industries, hospitals & private contractors.

SHPE2000 Series

- **CAPACITY** – SHPE2000 Series: 2 cu.yds. (8')
- **MATERIAL HOPPER** – Rotationally molded double-wall polymer unibody spreader with smooth angled walls help maximize material flow. Features 4-piece ratchet tie-down kit. No drilling required. Molded fork slots in hoppers makes for easy one man installation & removal, requires extended fork, or lift from 4-point tie downs.
- **AUGER** – 2.5" dia. screw-type stainless steel auger system travels the length of the hopper floor, providing maximum material flow at a continuous rate. An independent spinner/auger controller allows for both independent spinner speed and an infinitely adjustable ratio between spinner and auger.
- **MATERIAL FLOW/OUTPUT** – Salt, 2.2 cu. ft./minute; Salt/Sand, 1.3 cu. ft./minute. Spread width is variable from 5 to 30 feet.
- **SPINNER CHUTE ASSEMBLY** – A 12" polymer disc is connected to a 3/4" diameter stainless steel shaft. The spreading material is guided from the stainless steel trough to the spinner plate through an enclosed heavy-duty polymer chute and spinner assembly with an external

deflector. The extra-wide adjustable deflector protects the vehicle and allows for complete directional spread control. A convenient spring-latch locking mechanism allows the spinner assembly to be removed for cleaning/storage. Extended chutes are available.

- **ELECTRIC MOTORS** – Two ultra-quiet 12-volt DC direct-drive motors, (.5 HP Auger Motor, .25 HP Spinner Motor), power the auger and spinner, and are encased in a heavy-duty poly housing along with vibrator. The wiring harness is constructed of 10-gauge automotive wire. An in-cab console features independent controls for the auger, spinner and vibrator.
- **STANDARD EQUIPMENT** – 1/4" black powder coated steel top screen. Heavy-duty poly-vinyl tarp with reinforced corners and tie-down kit. Heavy-duty 12 VDC vibrator, rated at 200 force pounds for maximum performance. Spreader hold-down kit.



3014199 - Variable speed controller standard with SHPE0750 Series, SHPE1500 Series, SHPE2000 Series, and SHPE4000



SHPE2000 SERIES

ELECTRIC DRIVE SALT & SAND SPREADERS

SHPE2250 **NEW**

The SHPE Series SaltDogg® spreaders are completely self-contained, ultra-durable spreader units designed for ice and snow control & are available from 3/4 yard to 6 yard capacity. The complete assembly mounts easily on utility vehicles, pickups, dump, platform & utility trucks, making it ideal for municipalities, shopping malls, industries, hospitals & private contractors.

SHPE2250

- **CAPACITY** – SHPE2250 2.20 cu.yds. (8')
- **MATERIAL HOPPER** – Rotationally molded double-wall polymer unibody spreader with smooth angled walls help maximize material flow. Features 4-piece ratchet tie-down kit. No drilling required. Molded fork slots in hoppers makes for easy one man installation & removal, requires extended fork, or lift from 4-point tie downs.
- **AUGER** – 5.25" large diameter variable pitch auger system travels the length of the hopper floor, providing maximum material flow at a continuous rate. An independent spinner/auger controller allows for both independent spinner speed and an infinitely adjustable ratio between spinner and auger.
- **MATERIAL FLOW/OUTPUT** – Salt, 3.2 cu. ft./minute; Salt/Sand, 2.3 cu. ft./minute. Spread width is variable from 5 to 30 feet.
- **SPINNER CHUTE ASSEMBLY** – A 14" polymer disc is connected to a 3/4" diameter stainless steel shaft. The spreading material is guided from the stainless steel trough to the spinner plate through an enclosed heavy-duty adjustable polymer chute and spinner assembly with an external shield, 2 adjustable side baffles. Separate chute mount converts chute into standard or extended length chute. A convenient spring-latch locking mechanism allows the spinner assembly to be removed for cleaning/storage.

- **ELECTRIC MOTORS** – Two ultra-quiet 12-volt DC direct-drive motors, (.75 HP Auger Motor, .5 HP Spinner Motor), power the auger and spinner, and are encased in a heavy-duty poly housing along with vibrator. The wiring harness is constructed of 8-gauge automotive wire. An in-cab console features independent controls for the auger, spinner and vibrator.
- **STANDARD EQUIPMENT** – 1/4" black powder coated steel top screen. Stainless steel inverted V. Heavy-duty poly-vinyl tarp with reinforced corners and tie-down kit. Heavy-duty 12 VDC vibrator, rated at 200 force pounds for maximum performance. Spreader hold-down kit.

AVAILABLE NOVEMBER 2011

3016934 - Variable speed controller
standard with SHPE2250, SHPE3000, &
SHPE6000



NEW

**5.25" LARGE
DIAMETER
VARIABLE
PITCH AUGER**

**Adjustable
Height
Chute**



ELECTRIC DRIVE SALT & SAND SPREADERS

SHPE3000

The SHPE Series SaltDogg® spreaders are completely self-contained, ultra-durable spreader units designed for ice and snow control & are available from 3/4 yard to 6 yard capacity. The complete assembly mounts easily on utility vehicles, pickups, dump, platform & utility trucks, making it ideal for municipalities, shopping malls, industries, hospitals & private contractors.

SHPE3000

- **CAPACITY** – SHPE3000: 3 cu.yds. (8'6")
- **MATERIAL HOPPER** - 100% rotationally molded double-wall polymer unibody spreader with smooth angled walls help maximize material flow. Installs using the included four-piece ratchet tie-down kit.
- **AUGER** - 6" auger system travels the length of the hopper floor, providing maximum material flow at a continuous rate. An independent spinner/auger controller allows for both independent spinner speed and an infinitely adjustable ratio between spinner and auger.
- **MATERIAL FLOW/OUTPUT** – Salt, 3.2 cu. ft./minute; Salt/Sand, 2.3 cu. ft./minute. Spread width is variable from 5 to 30 feet.
- **SPINNER CHUTE ASSEMBLY** - A 14" polymer disc connected to a 3/4" diameter stainless steel shaft. Enclosed heavy-duty polymer chute and spinner assembly with an external deflector. Total spread path ranges from 5' to 30'. A convenient spring-latch locking mechanism allows the spinner assembly to be removed for cleaning/storage. The chute is adjustable with 2 positions.
- **DOUBLE DOORS** - Interlocking gutter system and double-door lid channels water away. Flexible elastomer hinges. Three pins for easy door removal.

- **ELECTRIC MOTORS** - Two ultra-quiet 12-volt DC direct-drive motors, (.75 HP Auger Motor, .5 HP Spinner Motor), power the auger and spinner, and are encased in a heavy-duty poly housing along with vibrator. The wiring harness is constructed of automotive wire. An in-cab controller features independent controls for the auger, spinner and vibrator.
- **STANDARD EQUIPMENT** - 1/4" black powder coated steel top screen, Spreader tie-down kit, Hinged poly lids, Stainless steel inverted V, 12 VDC LED Brake Light, Heavy-duty 12 VDC vibrator rated at 400 force pounds for maximum performance



Interlocking gutter double-door lid system



12 VDC vibrator rated at 400 force pounds



SHPE3000



3016934 - Variable speed controller
standard with SHPE2250, SHPE3000, & SHPE6000

ELECTRIC DRIVE SALT & SAND SPREADERS

SHPE4000 & SHPE6000 **NEW**

The SHPE Series SaltDogg® spreaders are completely self-contained, ultra-durable spreader units designed for ice and snow control & are available from 3/4 yard to 6 yard capacity. The complete assembly mounts easily on utility vehicles, pickups, dump, platform & utility trucks, making it ideal for municipalities, shopping malls, industries, hospitals & private contractors.

SHPE4000 & SHPE6000

- **CAPACITY** – SHPE4000 4.0 cu.yds. (8'4"); SHPE6000 6.0 cu.yds. (10'7")
- **MATERIAL HOPPER** – Rotationally molded polymer spreader with smooth angled walls help maximize material flow. Features 4-piece ratchet tie-down kit. No drilling required.
- **AUGER** – 5.5" (6" on SHPE6000) large diameter auger system travels the length of the hopper floor, providing maximum material flow at a continuous rate. An independent spinner/auger controller allows for both independent spinner speed and an infinitely adjustable ratio between spinner and auger.
- **MATERIAL FLOW/OUTPUT** – Salt, 3.2 cu. ft./minute; Salt/Sand, 2.3 cu. ft./minute. Spread width is variable from 5 to 30 feet.
- **SPINNER CHUTE ASSEMBLY** – A 14" polymer disc is connected to a 3/4" diameter stainless steel shaft. The spreading material is guided from the stainless steel trough to the spinner plate through an enclosed heavy-duty polymer chute and spinner assembly with an external shield. A convenient spring-latch locking mechanism allows the spinner assembly to be removed for cleaning/storage.
- **ELECTRIC MOTORS** – Two ultra-quiet 12-volt DC direct-drive motors power the auger and spinner, (SHPE4000 - .5 HP Auger Motor, .4 HP Spinner Motor, SHPE6000 - .75 HP Auger Motor, .5 HP Spinner Motor), and are encased in a heavy-duty poly housing along with independently powered vibrator(s). The wiring harness is constructed of 10-gauge automotive wire. An in-cab console features independent controls for the auger, spinner and vibrator.
- **STANDARD EQUIPMENT** – Two 1/4" black powder coated steel top screens. Stainless steel inverted V. Heavy-duty poly-vinyl tarp with reinforced corners and tie-down kit. Spreader hold-down kit. Two Heavy-duty 12 VDC vibrators, rated at 400 of force pounds each for maximum performance (SHPE4000 only). Heavy-duty 12 VDC vibrator, rated at 900 of force pounds for maximum performance (SHPE600 only).

SHPE6000 AVAILABLE DECEMBER 2011



SHPE4000



SHPE6000



3014199 - Variable speed controller standard with SHPE0750 Series, SHPE1500 Series, SHPE2000 Series, and SHPE4000



3016934 - Variable speed controller standard with SHPE2250, SHPE3000, & SHPE6000



ELECTRIC DRIVE SALT & SAND SPREADERS

1400601SS & 1400701SS

All hopper spreaders are completely self-contained, ultra durable spreader units designed for ice and snow control. The rugged design allows for use with salt, sand and other materials. The complete assembly mounts easily on pickup, dump and platform trucks making it ideal for municipalities, shopping malls, industries, hospitals and private contractors.

1400601SS & 1400701SS

- **CAPACITY** – 1400601SS 2.0 cu.yds. (8'); 1400701SS 1.5 cu.yds. (6')
- **GENERAL** – Completely self-contained, ultra durable spreader unit designed for ice and snow control. The rugged design allows for use with salt, sand and other materials. The complete assembly mounts easily on pickup, dump and platform trucks making it ideal for municipalities, shopping malls, industries, hospitals and private contractors.
- **ELECTRIC MOTORS** – Two ultra-quiet 12-volt DC direct-drive motors, (.75 HP Auger Motor, .5 HP Spinner Motor), power the conveyor and spinner, and are encased in a heavy-duty housing. The wiring harness is constructed of 8-gauge automotive wire. An in-cab console features independent controls for the conveyor and spinner.
- **STAINLESS STEEL MATERIAL HOPPER** – Electrically welded high-quality grade 304 stainless steel components, including: Hopper, Hopper Supports, Hopper Floor, Gussets, Spinner Chute Assembly, Deflectors and Engine Hood.
- **CONVEYOR** – The conveyor is made of 12" wide all-steel pintle chain with 3/16" x 3/4" cross bars. Chain strength is 11,000 lbs. per strand. The drive sprockets are 6-tooth cast iron, on a 1-1/8" diameter shaft. The conveyor chain has an adjustment range of 3-1/2". The drive shaft has heavy-duty, sealed, self-aligning ball bearings with grease fittings. The idler shaft with sprocket has heavy-duty 1" diameter ball bearings.
- **FEEDGATE** – Lever operated with a friction lock for accurate adjustment.
- **SPINNER CHUTE ASSEMBLY** – A 12" polymer disc with four fins is connected to a 3/4" diameter stainless steel shaft secured on the pillow block and motor bearing. The spreading material is guided from the conveyor to the spinner plate through an enclosed high-quality grade 304 stainless steel chute with internal and external deflectors. Adjustable deflectors allow for complete directional spread control. Total spread radius ranges from 2' to 30'. The extra wide rear deflector protects the rear and under carriage of the vehicle.

304SS

3016934 - Variable speed controller
standard with 1400601SS & 1400701SS



STANDARD
CHUTE
ADJUSTS
UP TO 11.5"

1400601SS



GAS DRIVE SALT & SAND SPREADERS

CARBON STEEL, STAINLESS STEEL, POLYMER

CARBON STEEL, STAINLESS STEEL, POLYMER

• CAPACITY –

Carbon Steel Models: 1.5 cu.yds. (6') & 2.0 cu.yds. (8');

Stainless Steel Models: 1.5 cu.yds. (6'), 2.0 cu.yds. (8'), 2.5 cu.yds. (10');

Polymer Models: 2.0 cu.yds. (8')

• **GENERAL** – All hopper spreaders are completely self-contained, ultra durable spreader units designed for ice and snow control. The complete assembly mounts easily on pickup, dump and platform trucks making it ideal for municipalities, shopping malls, industries, hospitals and private contractors.

• **STEEL/STAINLESS STEEL MATERIAL HOPPER*** – Electrically welded 12-gauge ends and steel sides sloped at 45° are constructed with channel formed top edges. 12-gauge vertical supports add extra strength to the unit. The floor is constructed of 10-gauge steel.

**Stainless steel models feature high-quality grade 304 stainless steel components, including: Hopper, Hopper Supports, Hopper Floor, Gussets, Spinner Chute Assembly, Deflectors and Engine Hood.*

• **POLYMER MATERIAL HOPPER** – Rotationally molded double-wall polymer unibody spreader with smooth angled walls to maximize material flow. No drilling installation.

• **CONVEYOR** – The conveyor is made of 12" wide all-steel pintle chain with 3/16" x 3/4" cross bars. Chain strength is 11,000 lbs. per strand. The drive sprockets are 6-tooth cast iron, on a 1-1/8" diameter shaft. The conveyor chain has an adjustment range of 3-1/2". The drive shaft has heavy-duty, sealed, self-aligning ball bearings with grease fittings. The idler shaft with sprocket has heavy-duty 1" diameter ball bearings.

• **CONVEYOR GEAR CASE** – Gear is constructed of aluminum bronze, worm gear is hardened steel and ground. Housing is made of durable cast iron. Gear ratio is 20:1 with 1" input shaft and 1-1/8" output shaft on tapered roller bearings

• **FEEDGATE** – Lever operated with a friction lock for accurate adjustment.

• **SPINNER CHUTE ASSEMBLY**** – A polymer disc with four fins is connected to a 3/4" diameter stainless steel shaft secured on two pillow block bearings. The spreading material is guided from the conveyor to the spinner plate through an enclosed 12-gauge chute with internal and external deflectors. Total spread radius ranges from 2' to 30'. Extended chutes are available.

***Stainless steel & polymer hoppers feature high-quality grade 304 stainless steel Spinner Chute Assembly, Deflectors and Engine Hood.*

• **ENGINE** – Heavy-duty 10.5 horsepower Briggs & Stratton Intek industrial/commercial gasoline engine. Engine comes equipped with alternator and 12 volt electric starter with in-cab start/stop and electric throttle control (standard).

• **ELECTRIC THROTTLE CONTROL** – Throttle control unit allows for full-range of throttle settings, including idle and full choke, via the in-cab hopper control box.

• **CLUTCH** – 12 volt DC electric clutch has a three-position in-cab switch, for greater control and material economy. Also allows for low-speed operation and spot spreading.



1400050 (Carbon Steel Hopper Spreader Kit)



304SS

1400050SS (Stainless Steel Hopper Spreader Kit)



1400400 (Polymer Hopper Spreader Kit)

**KITS INCLUDE:
SPREADER,
INVERTED "V"
& TOP SCREEN**

3.5, 4, & 4.5 YD. MUNICIPAL HOPPER SPREADERS

3.5, 4, & 4.5 CUBIC YARD, CONVEYOR

Designed for dump bodies and flat beds with a GVW chassis of 15,000 to 26,000 lbs. and available with either hydraulic motor drive or 10½ H.P. gas engine.

SPECIFICATIONS

CAPACITY:

- Available in 3.5 cu.yds. (8'), 4 cu.yds. (9'), & 4.5 cu.yds. (10')

GENERAL:

- Self contained hopper
- Spreads free flowing materials sand and/or salt
- Spread width of 4' to 30'

POWER SOURCE:

- Hydraulic Drive: 2 Independent hydraulic motors (15 GPM @ 1,500 PSI)
- Gas Engine: 10.5 horsepower, Briggs & Stratton Intek

MATERIAL HOPPER:

- 12 gauge 304 Stainless steel with continuously welded seams.
- All hopper sides are formed with a continuous "J" channel profile for added rigidity and strength. Six (6) 12 gauge body gussetts.
- Optimum material feed is maintained by hopper side walls sloped at 45°
- Heavy duty, 4 section hinged top grate is standard. Bars are 1/4" diameter located on 3" center grid (installed).
- Built-in four corner lift points.

FEEDGATE:

- 12.25" W x 8" T, 12 ga., adjustable

CONVEYOR:

- Conveyor is 14-1/2" wide O.D. x 12-1/2" wide on center, all steel pintle chain type, (#667H Pitch) with 1/4" x 1" crossbars on 4-5/8" centers, 12,500 PSI/Strand.

- Replaceable 10 gauge stainless steel chain shields.
- Replaceable 10 gauge stainless steel conveyor floor.
- 10 gauge stainless steel inverted Vee (installed).
- Conveyor driven by 20:1 ratio worm gearbox utilizing tapered bearings
- Conveyor chain is adjustable for chain take up, providing optimum performance and drive life.
- Chain drive and idler sprockets are 6-tooth cast sprockets keyed to 1-1/4" shafts.
- Conveyor chain wiper minimizes waste.

SPINNER ASSEMBLY:

- Spinner chute has two adjustable internal baffles
- Four (4) external baffles (3 adjustable, 1 fixed)
- 18" x 3/4" thick polyurethane spinner disc
- Hydraulic model's chute utilizes (4) spring loaded SS quick detach pins for ease of: material unloading, tow hitch access, and storage.
- Bolt-on spinner housing minimizes replacement cost.



Optional LSI Liquid Spray System (55 gal.)



Optional Cab Guard (Part No. 1497051)



Shown with Optional Light Bar (Part No. 8891144)



6, 7, 8 YD. MUNICIPAL HOPPER SPREADERS

NEW 6, 7, 8 CUBIC YARD, AUGER

Designed for dump bodies and flat beds with a minimum 33,000 lbs. GVW chassis

SPECIFICATIONS

- Capacity - Available in 6 cu.yds. (10'), 7 cu.yds. (11'), 8 cu.yds. (12')
- Hydraulic Drive - Two independent, direct-drive hydraulic motors (Hi-Torque 63.9 cu. in. auger motor & 2.8 cu. in. spinner motor)
- 10 Gauge, 304 SS Hopper Body; 7 Gauge 304 Stainless Steel Long Sills & Cross Sills
- 7" Hard Surfaced Auger with Multi-Pitch Design for Optimum Flow, 1/2" Flighting
- 4-Bolt, 2" Diameter Auger Bearing
- Adjustable Inverted "V" Prevents Material Compaction & Reduces Component Wear

- Adjustable Height Spinner Chute
- 18" Urethane Spinner Disc
- 6 HD Hinged Top Screens, 2-1/2" x 2-1/2" openings (3/8" round bar over 3/8" rod with 4" center peak)
- 2" x 4" x 1/4" Stainless Steel Tubing longitudinal screen supports.
- Built-In Rubber Side Deflector Mounts (optional belted rubber Part Number 1492144)
- Sloped Front & Rear Panels
- (4) 5/8" diameter lift points

NEW



**7" DIAMETER
HARD SURFACED
AUGER with
MULTI-PITCH
DESIGN**



7" Hardened Auger



High Torque Auger Motor



2" Auger Bearing



Optional Rubber Side Deflectors
Part No. 1492144

304SS

1471056SSH



6, 7, 8, 9 YD. MUNICIPAL HOPPER SPREADERS

6, 7, 8, 9 CUBIC YARD, CONVEYOR

Designed for municipalities and contractors with a minimum 33,000 lbs. GVW chassis.

SPECIFICATIONS

CAPACITY:

- Available in 6 cu.yds. (9'), 7 cu.yds. (10'), 8 cu.yds. (10'), 9 cu.yds. (10')

GENERAL:

- Self contained hopper
- Spreads free flowing materials sand and/or salt
- Spread width of 4' to 45'

POWER SOURCE:

- Hydraulic Drive: Two independent direct drive hydraulic motors (17 GPM @ 1,500 PSI). 15 gpm conveyor. 12 gpm spinner.

MATERIAL HOPPER:

- 10 gauge 304 Stainless steel with continuously welded seams.
- All hopper sides are formed with a continuous "J" channel profile for added rigidity and strength. Ten (10), 10 gauge body gussets.
- Optimum material feed is maintained by hopper side walls sloped at 45°
- Built-in four corner lift points.

FEEDGATE:

- 10-gauge, 304 stainless steel with scaled driver side screw jack adjustment.
- 18-5/8" wide x 12" tall opening.

CONVEYOR:

- 24" wide pintle chain conveyor with 3/8" thick x 1-1/2" wide crossbars on 4-1/2" centers (667X Pitch), 21,000 PSI/Strand.
- 2" diameter drive shaft with 4-bolt relubeable bearing.
- 8-tooth cast iron sprockets.

- 50:1, 25:1, or 6:1 direct-drive gearbox with extended through-shaft for ground speed sensor.
- 1-1/2" diameter idler shaft with 4" adj. range relubeable bearing.
- Conveyor chain wiper made of belted rubber minimizes waste.

STANDARD INSTALLED EQUIPMENT:

- 4-section hinged top grate screens. 3/8" diameter bar on 3" centers with 1/4" x 2" x 2" angle iron frame.
- Hinged to 6", 7-gauge horizontal crossbeam.
- 10-gauge, 304 stainless steel inverted "V" prevents material compaction and reduces wear on drive train components.

CHUTE/SPINNER ASSEMBLY:

- 10-gauge, 304 stainless steel laser cut parts with smooth radius corners.
- 4 telescopic adjustments in 3" increments to accommodate varying body mounting heights. 25.7" to 38.5" min/max adjustment below longsills.
- Two (2) adjustable, internal baffles direct material to 20" diameter x 5/8" thick, 6-fin poly spinner disc.
- Three (3) adjustable external and one (1) fixed deflector with overlapping corners provide a precision spread pattern.
- Top-mounted, direct-drive hydraulic spinner motor provides exceptional spread pattern.
- Two (2) stainless steel spring latches quick release hinged chute for bulk material unloading and convenient ground storage.

304SS



145075SSH (shown with optional 8891167 Lightbar and LS4 Liquid Spray System)



10-16 YD. MUNICIPAL HOPPER SPREADERS

10-16 CUBIC YARD, CONVEYOR

Designed for municipalities and contractors with a minimum 35,000 lbs. GVW chassis.

SPECIFICATIONS

CAPACITY:

- Available in 10-16 cu.yds. (12' or 14')

GENERAL:

- Self-contained hopper.
- Spreads free flowing materials sand and/or salt.
- Spread width of 4' to 40'.

POWER SOURCE:

- Hydraulic Drive: Two independent direct drive hydraulic motors (17 GPM @ 1,500 PSI). 15 gpm conveyor. 12 gpm spinner.

MATERIAL HOPPER:

- 7-gauge 304 stainless steel cross members.
- 10-gauge 304 stainless steel, long sills with rear enclosure & integral chain shields.
- 8-gauge 304 stainless steel replaceable floor.
- 10-gauge 304 stainless steel sides (continuously welded seams), gussets and rear panel.
- 10-gauge 304 stainless steel front panel.
- Four (4) 5/8" thick lift points.

FEEDGATE:

- 10-gauge, 304 stainless steel with scaled driver side screw jack adjustment.
- 18-5/8" wide x 12" tall opening.

CONVEYOR:

- 24" wide pintle chain conveyor with 3/8" thick x 1-1/2" wide crossbars on 4-1/2" centers (667X Pitch), 21,000 PSI/Strand.
- 2" diameter drive shaft with 4-bolt relubeable bearing.
- 8-tooth cast iron sprockets.

Options:

- 3-Point Grease Line Manifold (Part No. 3020624)
- Chain Oiler (Part No. 3020625)
- Crank-up Chute (Part No. 3020626)

- 50:1, 25:1, or 6:1 direct-drive gearbox with extended through-shaft for ground speed sensor.
- 1-1/2" diameter idler shaft with 4" adjustable range relubeable bearing.
- Conveyor chain wiper made of belted rubber minimizes waste.

STANDARD INSTALLED EQUIPMENT:

- 6-section hinged top grate screens. 3/8" diameter bar on 3" centers with 1/4" x 2" x 2" angle iron frame.
- Hinged to 6", 7-gauge horizontal crossbeam.
- 10-gauge, 304 stainless steel inverted "V" prevents material compaction and reduces wear on drive train components.

CHUTE/SPINNER ASSEMBLY:

- 10-gauge, 304 stainless steel laser cut parts with smooth radius corners.
- 4 telescopic adjustments in 3" increments to accommodate varying body mounting heights. 25.7" to 38.5" min/max adjustment below longsills.
- Two (2) adjustable, internal baffles direct material to 20" diameter x 5/8" thick, 6-fin poly spinner disc.
- Three (3) adjustable external and one (1) fixed deflector with overlapping corners provide a precision spread pattern.
- Bottom-mounted, direct-drive hydraulic spinner motor provides exceptional spread pattern.
- Two (2) stainless steel spring latches quick release hinged chute for bulk material unloading and convenient ground storage.

304SS



1451057SSH (shown with optional LSSH Liquid Spray System and 12" side extensions)



UNDER TAILGATE SPREADERS

HYDRAULIC AND ELECTRIC MODELS

HYDRAULIC MODELS

- Available in 304 Stainless Steel or Carbon Steel w/ Orange Powder Coat Finish
- Models with Direct Drive operation reduces number of moving parts, assuring dependable service.
- Heavy-Duty 5:1 Gearbox Models increases torque at the auger.
- Standard Discharge or Side Discharge available
- Under tailgate mounting allows normal use of dump body without interference from spreader.
- Rugged 10-gauge trough has 3-point hinged bottom cover that provides easy access to entire auger assembly for easy, one-person cleanout.
- Spreads from 4' to 40' of rock salt, free-flowing granular materials or chemicals.
- 6" Auger is supported by 1-1/4" steel shaft ends and has 3/8" flighting to the discharge port delivering a continuous, consistent flow of spreading material.
- Poly Adapter for auger motor improves serviceability.
- Sealed, self-aligning 1-1/4" diameter radial bearings with grease fittings.
- Low-speed, high-torque orbital motors.
- Spreader assemblies come with 18" polyurethane spinner and dump body mounting plates.
- Stainless steel model includes stainless steel mounting brackets.
- Hydraulic safety lockout system.

Options:

- Speed Sensing Motors
- Hard Surface Auger

Accessories:

- Powder Coated Spill Shields (Part No. 924F016PR)
- Stainless Steel Spill Shields (Part No. 924F016SSPR)

ELECTRIC MODELS

- Available in 304 Stainless Steel
- Two ultra-quiet 12-volt DC direct-drive motors power the auger and spinner, and are encased in a heavy-duty housing. The wiring harness is constructed of 8-gauge automotive wire. An in-cab console features independent controls for the auger and spinner.
- Under tailgate mounting allows normal use of dump body without interference from spreader.
- Rugged 10-gauge trough has 3-point hinged bottom cover that provides easy access to entire auger assembly for easy, one-person cleanout.
- Spreads from 4' to 25' of rock salt, free-flowing granular materials or chemicals.
- 6" Auger is supported by 1-1/4" steel shaft ends and has 3/8" flighting to the discharge port delivering a continuous, consistent flow of spreading material.
- Poly Adapter for auger motor improves serviceability.
- Sealed, self-aligning 1-1/4" diameter radial bearings with grease fittings.
- Spreader assemblies come with 14" polyurethane spinner and stainless steel dump body mounting plates.

Accessories:

- Stainless Steel Spill Shields (Part No. 924F016SSPR)



92440SSA (electric standard discharge)



92420SSA (standard discharge)



92425SSA (side discharge)



3016934 - Variable speed controller standard with 92440SSA



92430A (closeup of 5:1 gearbox)



Buyers

REPLACEMENT TAILGATE SPREADER

9035000 & 5535000

Fits 1-Ton/Super Duty Dump Bodies (9035000)

Fits DumperDogg Inserts (5535000)

9035000 & 5535000

- All 304 stainless steel body construction won't rust or corrode
- Carbon steel dump mounting hardware black powder coated (9035000)
- 12VDC, 1/2 HP Spinner Motor 54 AMP/ 620 RPM
- 12VDC, 3/4 HP Auger Gear Motor 50 AMP/ 23 RPM
- Adjustable spread pattern spreads from 4' to 25' of rock salt, free-flowing granular materials or chemicals
- Includes in-cab, independent variable spinner speed control and auger control
- Includes dual-flight augers with mixing tines
- Two augers, 5" O.D. x 2.4" I.D. x 20"L
- 14" Poly spinner
- Mounting brackets adjust from 73"-95" (9035000)
- Quick and Easy installation.



3016934 - Variable speed controller
standard with 9035000 & 5535000



5535000



304SS

9035000



LIQUID SPRAY PRE-WETTING SYSTEMS

LS1, LS2, LS3, LS4, LS4H, LS4T, LS4TH, LS5, LS5H, LS6, LS7, LS8, LS102H

FEATURES

- 12-volt, 3 GPM/45 PSI electric diaphragm pump
- NEW *Hydraulic Drive: 4.5 GPM @ 1,750 RPM (150 PSI) with Proportioning Valve, Bronze pump, bronze gears, stainless steel shaft
- 30-gallon polymer reservoir (48" L x 13" W x 14" T)
- 55-gallon polymer reservoir (34" L x 23" W x 26" T)
- 105-gallon polymer reservoir (69" L x 20" W x 25" T)
- Low Pressure – empty tank light/buzzer indicator
- In-cab variable speed pump control (electric models)
- Adjustable Hydraulic proportioning valve (hydraulic models)

- Systems include tank, pump, cab controller, hoses, fittings, ball valve, filter, wiring, connectors, brackets and tie-downs
- Enclosed pump system for corrosion resistance
- 304 Stainless Steel Mounts

BENEFITS

- Provides more efficient salt distribution with fewer applications required
- Speeds the melting process and works at lower temperatures than salt
- Residual material on the pavement lasts longer
- Easy to use and maintain



LS1 & LS3 (55 gal. poly reservoir)



LS4 & LS5 (105 gal. poly reservoir)



LS4T (tailgate mount 105 gal. poly reservoir)



LS6 (30 gal. poly reservoir)



LS7 & LS8 (30 gal. poly reservoir)



LS102H (Hydraulic Enclosure with Proportioning Valve)

LIQUID SPRAY SYSTEMS

PART NO.	DESCRIPTION	FITS	WT.
LS1	12-Volt, Cab Control, 55 Gal. Poly Reservoir, V-Box Mount	3.5 cu. yd. +	148 lbs.
LS2	12-Volt, Cab Control, Reservoir Excluded, V-Box Mount	3.5 cu. yd. +	48 lbs.
LS3	12-Volt, Cab Control, Two 55 Gal. Poly Reservoirs, V-Box Mount	3.5 cu. yd. +	248 lbs.
LS4	12-Volt, Cab Control, 105 Gal. Poly Reservoir, V-Box Mount	6 cu. yd. +	319 lbs.
LS4H	Hydraulic, 105 Gal. Poly Reservoir, V-Box Mount	6 cu. yd. +	351 lbs.
LS4T	12-Volt, Tailgate Mount, Cab Control, 105 Gal. Poly Reservoir	24" + tailgates	325 lbs.
LS4TH	Hydraulic, Tailgate Mount, Cab Control, 105 Gal. Poly Reservoir	24" + tailgates	357 lbs.
LS5	12-Volt, Cab Control, Two 105 Gal. Poly Reservoirs, V-Box Mount	7 cu. yd. +	348 lbs.
LS5H	Hydraulic, Two 105 Gal. Poly Reservoirs, V-Box Mount	7 cu. yd. +	380 lbs.
LS6	12-Volt, Cab Control, 30 Gal. Poly Reservoir, V-Box Mount	SHPE1500/2000 Series	116 lbs.
LS7	12-Volt, Cab Control, 30 Gal. Poly Reservoir, V-Box Mount	SCH Series	85 lbs.
LS8	12-Volt, Cab Control, Two 30 Gal. Poly Reservoir, V-Box Mount	SCH Series	197 lbs.
LS102H	Enclosure Assembly, Hydraulic		49 lbs.

REPLACEMENT PARTS

PART NO.	DESCRIPTION
WSE1	Spray System Controller, 12V
WSE3	12V Electric Diaphragm Pump, 3 GPM, 45 PSI
WSE4	Pressure Switch, 1/4" NPT
WSE10	Ball Valve, 1/2" NPT
WSE11	200 Micron Screen Filter, 3/4" NPT, 6 GPM
WSE75	Spray System Controller, Hydraulic



WSE1



WSE75

IN-BED LIQUID SPRAY SYSTEMS

6196335, 6198335

6196335 for 6' beds 6198335 for 8' beds

- 2" hitch mounted liquid spray system
- 335 gallon poly reservoir/bladder for 6' (#6196335) or 8' (#6198335) pick-up bed/ flatbed with built-in tie points
- 7 gallons per minute diaphragm pump dispenses up to 50 gallons per lane mile.
- 12 VDC, 28 amps max, rear quick connect harness
- In-cab on/off control, standard. Pressure switch activates pump on demand
- Quick Detach PVC spray bar
- Stainless steel pump cover w/ LED license plate light
- Light weight, reinforced polymer reservoir rolls-up for bulkhead storage.
- Optional: 3/8"x50' hose reel with adjustable hand-held spray nozzle for side walks, bus shelters and hard to reach areas.
- Quick and simple, one-person installation with hitch pin.
- Lightweight and better visibility than fixed tank systems



335 gal. poly bladder



adjustable spray nozzle - pressure switch activates pump on demand

IN-BED LIQUID SPRAY SYSTEMS

PART NO.	DESCRIPTION	WT.
6196335	In-Bed Liquid Spray System for 6ft. Beds	80 lbs.
6198335	In-Bed Liquid Spray System for 8ft. Beds	80 lbs.
6190000	System without Reservoir	70 lbs.
6191000	Optional Hose Reel with Adjustable Spray Nozzle	52 lbs.
60191010	Optional Stainless Steel Hose Reel with Adjustable Spray Nozzle	52 lbs.



SEE THE VIDEO ONLINE
at
saltdogg.com



ACCESSORIES

POLY SALT BOXES, LIGHT BAR KITS, DRIVEWAY MARKERS, SPREADER LIGHTS

POLY SALT BOXES

- Durable, corrosion free construction
- Double panel, sloped lid with integral hasp
- Stainless steel hinge
- Hand holds for ease of carrying

- Fork lift slots
- Stackable (9031100)
- 9031100: 36"W x 24"D x 30"H
- 9031105: 36"W x 24"D x 20"H (Ships UPS)
- 9031110: Salt Scoop



LIGHT BAR KITS

- 8891144 44" LED Light Bar Kit Includes: Wire Harness, (2) LED STT lights, (2) LED Strobe Lights, (3) LED Marker lights, (2) LED Load Equalizers and Lightbar
- 8891167 66" LED Light Bar Kit Includes: Wire Harness, (4) LED STT lights, (2) LED Strobe lights, (2) LED SST lights, (3) LED Marker lights, (2) LED Load Equalizers and Lightbar
- 8891166 66" LED Light Bar Kit Includes: Same as 8891167, but includes (2) LED backup lights instead of (2) extra STT lights.



8891144 - 44" LED Light Bar Kit
fits 3.5, 4, & 4.5 cu. yd. Municipal Spreaders

304SS



8891167 - 66" LED Light Bar Kit
fits 6-16 cu. yd. Municipal Spreaders

DRIVEWAY MARKERS

- 5/16" x 48"
- Orange or Yellow fiberglass with highly reflective tape
- Pencil end for easy staking
- Rounded end resists splintering
- Sold in cases of 36 markers
- 1308600: Orange Driveway Markers
- 1308605: Yellow Driveway Markers



LIGHT OPTIONS FOR SPREADERS



1492100 - 5" 12V-24V Utility Light
Clear, 2.92 Amps, 35 Watts



1492110 - 5" 12V-24V LED Utility Light
Clear, 54 LED's, .3 Amps, 375 Lumens



1492111 - 5" 12V-24V LED Utility Light
Amber, 54 LED's, .3 Amps, 375 Lumens



1492115 - 5" 12V-24V LED Utility Light
Clear, 6 LED's, 1.5 Amps, 1350 Lumens

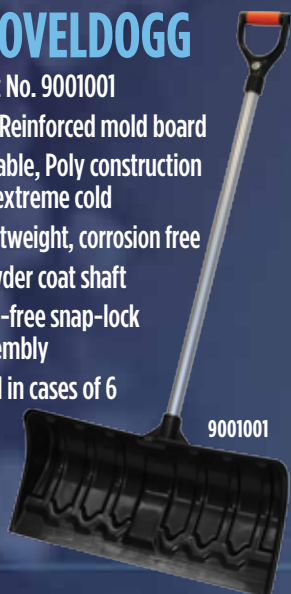


1492116 - 5" 12V-24V LED Utility Light
Amber, 6 LED's, 1.5 Amps, 1350 Lumens

BRIGHTER LED'S

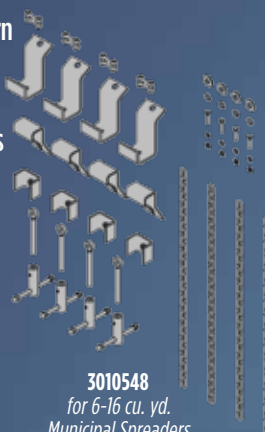
SHOVELDOGG

- Part No. 9001001
- 24" Reinforced mold board
- Durable, Poly construction for extreme cold
- Lightweight, corrosion free
- Powder coat shaft
- Tool-free snap-lock assembly
- Sold in cases of 6



TIE DOWN KIT

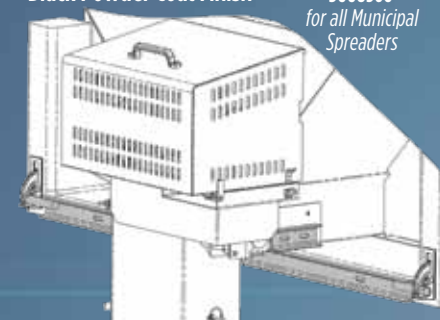
- Part No. 3010548
- Heavy-Duty Chain & Turn Buckle Tie Down Kit
- Zinc Plated Hardware
- Powder Coated Brackets



3010548
for 6-16 cu. yd. Municipal Spreaders

DUMP BODY TAILGATE LOCK KIT

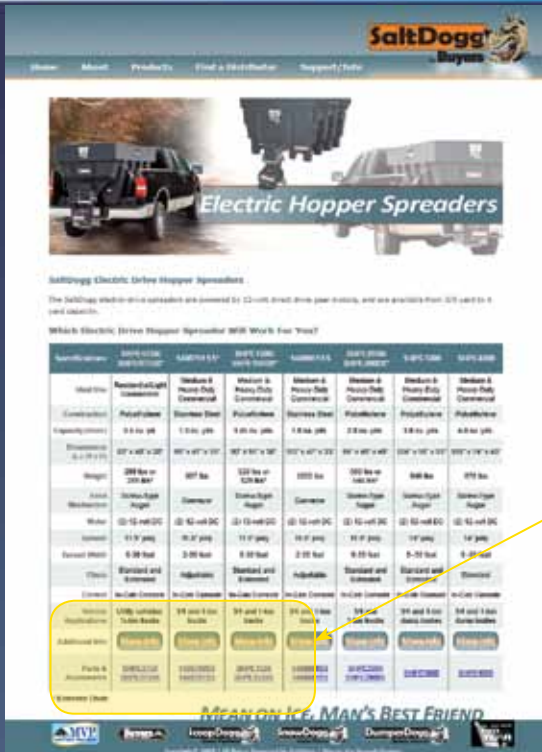
- Part No. 3008560
- 3" Structural Steel Channel
- 1.25" Pins
- Black Powder Coat Finish



3008560
for all Municipal Spreaders

HOW TO LOCATE REPLACEMENT PARTS

www.saltdogg.com



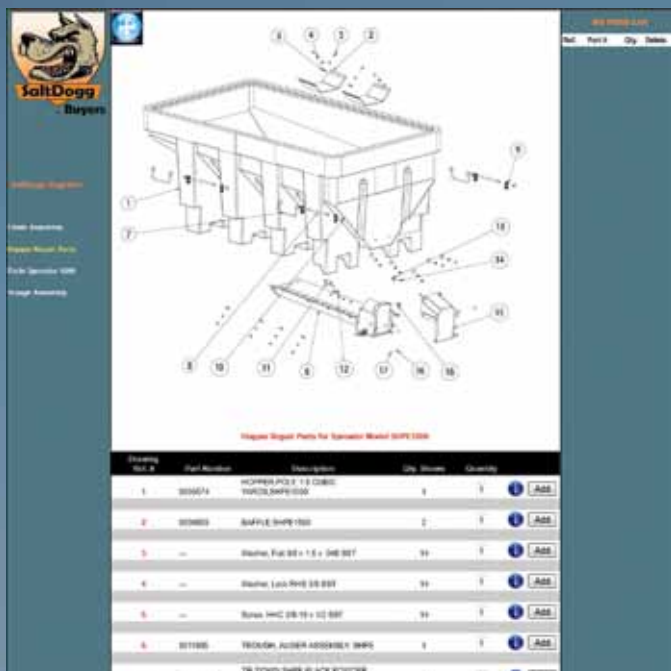
STEP 1

- Navigate to www.saltdogg.com in your web browser
- Locate the spreader you need information on under the **products** menu.
- In the **Parts & Accessories** row of the chart select the **spreader model** you need.



STEP 2

- On the left side select the **Diagram** you wish to view



STEP 3

- You are now able to see the diagram you selected along with the replacement part number below in the table.
- You are able to select the **quantity** you need and then **add** it to your parts list
- When all the parts you need have been added to the parts list you are able to **print** that list and make a call to our customer service department for ordering



SPECIFICATION CHART

	GENERAL							DIMENSIONS				
	PART NO.	CAPACITY	SPREADING MATERIAL	SPREADING WIDTH	VEHICLE APPLICATION*	CHUTE	WT.	OVERALL HEIGHT	OVERALL WIDTH	OVERALL LENGTH	HOPPER WIDTH	HOPPER LENGTH
WALK BEHINDS	WB100B	1.5 cu.ft./100 lb.	bagged salt	3-24 ft.	N/A	N/A	42 lbs.	31.5"	26.5"	40"	22.5"	19"
	WB200B	1.5 cu.ft./100 lb.	bagged salt	3-24 ft.	N/A	N/A	42 lbs.	31.5"	26.5"	40"	22.5"	19"
	WB400	2.5 cu.ft./200 lb.	bagged salt	44 in	N/A	N/A	67 lbs.	35"	44"	45"	18.3"	43.1"
TAILGATE	TGSUV1B	4.4 cu. ft.	#1 Rock Salt or similar material	12-14 ft.	SUV, 1/2-Ton, & 3/4-Ton Trucks	N/A	68 lbs.	40.5"	22.5"	20.5"	21"	19"
	TGSUVPROA	4.4 cu. ft.	#1 Rock Salt or similar material	3-30 ft.	SUV, 1/2-Ton, & 3/4-Ton Trucks	N/A	74 lbs.	40.5"	22.5"	20.5"	21"	19"
	TGS01B	8 cu. ft.	#1 Rock Salt or similar material	3-30 ft.	1/2-Ton, & 3/4-Ton Trucks	N/A	135 lbs.	45.7"	29.7"	30.3"	26"	26"
	TGS03	8 cu. ft.	Bulk Salt; 50/50 Salt/Sand mix	3-30 ft.	1/2-Ton, & 3/4-Ton Trucks	N/A	178 lbs.	45"	38"	30"	38"	28"
	TGS05B	10.79 cu. ft.	#1 Rock Salt or similar material	3-30 ft.	3/4-Ton & 1-Ton Trucks	N/A	212 lbs.	40.1"	54.3"	27.3"	52.25"	23"
	TGS06	10 cu. ft.	#1 Rock Salt or similar material	3-30 ft.	3/4-Ton & 1-Ton Trucks	N/A	160 lbs.	40"	63"	27"	52"	26.9"
	TGS07	11 cu. ft.	Bulk Salt; 50/50 Salt/Sand mix	3-30 ft.	3/4-Ton & 1-Ton Trucks	N/A	190 lbs.	46"	53"	31.5"	51"	26"
ELECTRIC SLIDE IN	SHPE0750	0.75 cu. yds.	Bulk Salt; 50/50 Salt/Sand mix	5-30 ft.	Utility Vehicle, 1/4-Ton, 1/2-Ton, 3/4-Ton Trucks	Standard	280 lbs.	28"	48"	63.2"	48"	53"
	SHPE0750X	0.75 cu. yds.	Bulk Salt; 50/50 Salt/Sand mix	5-30 ft.	Utility Vehicle, 1/4-Ton, 1/2-Ton, 3/4-Ton Trucks	Extended	289 lbs.	28"	48"	63.2"	48"	53"
	SHPE1500	1.5 cu. yds.	Bulk Salt; 50/50 Salt/Sand mix	5-30 ft.	3/4-Ton & 1-Ton Trucks	Standard	520 lbs.	38"	50.5"	99.7"	50.5"	87.3"
	SHPE1500X	1.5 cu. yds.	Bulk Salt; 50/50 Salt/Sand mix	5-30 ft.	3/4-Ton & 1-Ton Trucks	Extended	529 lbs.	38"	50.5"	99.7"	50.5"	87.3"
	SHPE2000	2 cu. yds.	Bulk Salt; 50/50 Salt/Sand mix	5-30 ft.	1-Ton Trucks (above 10,000 lbs. GVW)	Standard	560 lbs.	40"	47.8"	100"	47.8"	96"
	SHPE2000X	2 cu. yds.	Bulk Salt; 50/50 Salt/Sand mix	5-30 ft.	1-Ton Trucks (above 10,000 lbs. GVW)	Extended	564 lbs.	40"	47.8"	100"	47.8"	96"
	SHPE2250	2.2 cu. yds.	Bulk Salt; 50/50 Salt/Sand mix	5-30 ft.	1-Ton Trucks (above 10,000 lbs. GVW)	Adjustable	680 lbs.	44"	48"	114.2"	48"	98.5"
	SHPE3000	3 cu. yds.	Bulk Salt; 50/50 Salt/Sand mix	5-30 ft.	13,000 lbs GVW and above	Adjustable	945 lbs.	52.7"	49.6"	123.7"	48"	114"
	SHPE4000	4 cu. yds.	Bulk Salt; 50/50 Salt/Sand mix	5-30 ft.	15,000 lbs GVW and above	Standard	896 lbs.	43.5"	74"	114.8"	74"	99.5"
	SHPE6000	6 cu. yds.	Bulk Salt; 50/50 Salt/Sand mix	5-30 ft.	Minimum GVW of 25,999 lbs.	Standard	1344 lbs.	57"	77"	133.5"	77"	127"
	1400601SS	2.0 cu. yds.	Bulk Salt; 50/50 Salt/Sand mix	2-30 ft.	3/4-Ton & 1-Ton Trucks	Adjustable	995 lbs.	32.1"	47"	110.8"	47"	96"
	1400701SS	1.5 cu. yds.	Bulk Salt; 50/50 Salt/Sand mix	2-30 ft.	3/4-Ton & 1-Ton Trucks	Adjustable	682 lbs.	32.1"	47"	86.8"	47"	72"
GAS SLIDE IN, <i>continued next page</i>	SCH072SS 1400200SS	1.5 cu. yds.	Bulk Salt; 50/50 Salt/Sand mix	2-30 ft.	3/4-Ton & 1-Ton Trucks	Standard	753 lbs.	32.1"	47"	91.7"	47"	72"
	SCH072SSX 1400250SS	1.5 cu. yds.	Bulk Salt; 50/50 Salt/Sand mix	2-30 ft.	3/4-Ton & 1-Ton Trucks	Extended	764 lbs.	32.1"	47"	91.7"	47"	72"
	SCH096C 1400050	2 cu. yds.	Bulk Salt; 50/50 Salt/Sand mix	2-30 ft.	3/4-Ton & 1-Ton Trucks	Standard	945 lbs.	32.1"	47"	115.7"	47"	96"

* Vehicle Application is only a reference. The Gross Vehicle Weight (GVW) of the truck and calculated payload must be evaluated for each application.

STANDARD EQUIPMENT				CONSTRUCTION						
TOP SCREEN	COVER	VIBRATOR	INVERTED V	FRAME	HOPPER	POWER SOURCE	FEED MECHANISM	SPINNER	CONTROLLER	MOUNTING
black powder coated steel	Clear Poly	N/A	N/A	Powder Coat Steel	Polymer	N/A	Gravity Feed	9"	Manual Lever	N/A
black powder coated steel	Clear Poly	N/A	N/A	Stainless Steel	Polymer	N/A	Gravity Feed	9"	Manual Lever	N/A
black powder coated steel	Clear Poly	N/A	N/A	Powder Coat Steel/ Stainless Steel	Polymer	N/A	Gravity Feed	Drop Spread	Manual Lever	N/A
N/A	Fitted Polymer Lid	N/A	N/A	Powder Coat Steel	Polymer	12V DC	Manual Open/Close Gate w/ Gravity	9"	In-Cab On-Off	1-1/4 and 2" Receiver Hitch
N/A	Fitted Polymer Lid	Optional (3008241)	N/A	Powder Coat Steel	Polymer	12V DC	Gravity Feed w/ Integral Auger Assist	9"	Variable Speed	2" Class 4 Receiver Hitch
N/A	Fitted Polymer Lid	N/A	N/A	Powder Coat Steel	Polymer	12V DC	Gravity Feed w/ Integral Auger Assist	9"	Variable Speed	2" Class 4 Receiver Hitch
N/A	Fitted Polymer Lid	Optional (3020340)	N/A	Powder Coat Steel/ Stainless Steel	Polymer	12V DC Dual Shaft Gear Motor	Horizontal Auger Feed	12"	Variable Speed Vibrator Switch	2" Class 4 Receiver Hitch
N/A	Fitted Polymer Lid	N/A	N/A	Powder Coat Steel	Polymer	12V DC	Gravity Feed w/ Integral Auger Assist	9"	Variable Speed	Directly to Step Bumper, 2" Class 4 Receiver Hitch, Wintergate Mount
N/A	Hinged Polymer Lid	Standard (80 force lbs.)	N/A	Powder Coat Steel	Polymer	12V DC	Manual Open/Close Gate w/ Gravity	9"	Variable Speed Vibrator Switch	2" Class 4 Receiver Hitch
N/A	Dual Action Polymer Lid	Standard (200 force lbs.)	N/A	Powder Coat Steel/ Stainless Steel	Polymer	12V DC Dual Shaft Gear Motor	Horizontal Auger Feed	12"	Variable Speed Vibrator Switch	2" Class 4 Receiver Hitch
1/4" Black Powder Coated Steel	HD Poly-Vinyl Tarp	Standard (200 force lbs.)	N/A	N/A	Double Wall Polymer	(2) 12V DC direct drive	2.5" Stainless Steel Screw Type Auger	12"	Variable Speed Vibrator Switch	4-Point Tie Down System
1/4" Black Powder Coated Steel	HD Poly-Vinyl Tarp	Standard (200 force lbs.)	N/A	N/A	Double Wall Polymer	(2) 12V DC direct drive	2.5" Stainless Steel Screw Type Auger	12"	Variable Speed Vibrator Switch	4-Point Tie Down System
1/4" Black Powder Coated Steel	HD Poly-Vinyl Tarp	Standard (200 force lbs.)	N/A	N/A	Double Wall Polymer	(2) 12V DC direct drive	2.5" Stainless Steel Screw Type Auger	12"	Variable Speed Vibrator Switch	4-Point Tie Down System
1/4" Black Powder Coated Steel	HD Poly-Vinyl Tarp	Standard (200 force lbs.)	N/A	N/A	Double Wall Polymer	(2) 12V DC direct drive	2.5" Stainless Steel Screw Type Auger	12"	Variable Speed Vibrator Switch	4-Point Tie Down System
1/4" Black Powder Coated Steel	HD Poly-Vinyl Tarp	Standard (200 force lbs.)	N/A	N/A	Double Wall Polymer	(2) 12V DC direct drive	2.5" Stainless Steel Screw Type Auger	12"	Variable Speed Vibrator Switch	4-Point Tie Down System
1/4" Black Powder Coated Steel	HD Poly-Vinyl Tarp	Standard (200 force lbs.)	N/A	N/A	Double Wall Polymer	(2) 12V DC direct drive	2.5" Stainless Steel Screw Type Auger	12"	Variable Speed Vibrator Switch	4-Point Tie Down System
1/4" Black Powder Coated Steel	HD Poly-Vinyl Tarp	Standard (200 force lbs.)	Standard Stainless Steel	N/A	Double Wall Polymer	(2) 12V DC direct drive	5.25" Stainless Steel Variable Pitch Auger	14"	Variable Speed Vibrator Switch	4-Point Tie Down System
1/4" Black Powder Coated Steel	Interlocking double doors	Standard (400 force lbs.)	Standard Stainless Steel	Stainless Steel	Double Wall Polymer	(2) 12V DC direct drive	6" Stainless Steel Auger	14"	Variable Speed Vibrator Switch	4-Point Tie Down System
(2) 1/4" Black Powder Coated Steel	N/A	(2) Standard (400 force lbs.)	Standard Stainless Steel	Stainless Steel	Polymer	(2) 12V DC direct drive	5.5" Stainless Steel Auger	14"	Variable Speed Vibrator Switch	4-Point Tie Down System
(2) 1/4" Black Powder Coated Steel	N/A	Standard (900 force lbs.)	Standard Stainless Steel	Stainless Steel	Polymer	(2) 12V DC direct drive	6" Stainless Steel Auger	14"	Variable Speed Vibrator Switch	4-Point Tie Down System
1/4" Black Powder Coated Steel	Optional	N/A	Standard Stainless Steel	N/A	Stainless Steel	(2) 12V DC direct drive	12"W Conveyor	12"	Variable Speed Vibrator Switch	4-Point Tie Down System
1/4" Black Powder Coated Steel	Optional	N/A	Standard Stainless Steel	N/A	Stainless Steel	(2) 12V DC direct drive	12"W Conveyor	12"	Variable Speed Vibrator Switch	4-Point Tie Down System
1/4" Black Powder Coated Steel	Optional	N/A	Standard Stainless Steel	N/A	Stainless Steel	10.5 HP Briggs & Stratton Intek Gas Engine	12"W Conveyor	12"	In-Cab Control Console	4-Point Tie Down System
1/4" Black Powder Coated Steel	Optional	N/A	Standard Stainless Steel	N/A	Stainless Steel	10.5 HP Briggs & Stratton Intek Gas Engine	12"W Conveyor	12"	In-Cab Control Console	4-Point Tie Down System
1/4" Black Powder Coated Steel	Optional	N/A	Standard Powder Coated Steel	N/A	Powder Coated Steel	10.5 HP Briggs & Stratton Intek Gas Engine	12"W Conveyor	12"	In-Cab Control Console	4-Point Tie Down System

SPECIFICATION CHART, continued

	GENERAL							DIMENSIONS				
	PART NO.	CAPACITY	SPREADING MATERIAL	SPREADING WIDTH	VEHICLE APPLICATION*	CHUTE	WT.	OVERALL HEIGHT	OVERALL WIDTH	OVERALL LENGTH	HOPPER WIDTH	HOPPER LENGTH
GAS SLIDE IN, continued	SCH096CX 1400100	2 cu. yds.	Bulk Salt; 50/50 Salt/Sand mix	2-30 ft.	3/4-Ton & 1-Ton Trucks	Extended	955 lbs.	32.1"	47"	115.7"	47"	96"
	SCH096SS 140050SS	2 cu. yds.	Bulk Salt; 50/50 Salt/Sand mix	2-30 ft.	3/4-Ton & 1-Ton Trucks	Standard	750 lbs.	32.1"	47"	115.7"	47"	96"
	SCH096SSX 1400100SS	2 cu. yds.	Bulk Salt; 50/50 Salt/Sand mix	2-30 ft.	3/4-Ton & 1-Ton Trucks	Extended	760 lbs.	32.1"	47"	115.7"	47"	96"
	1400400	2 cu. yds.	Bulk Salt; 50/50 Salt/Sand mix	2-30 ft.	3/4-Ton & 1-Ton Trucks	Standard	837 lbs.	35"	47"	115.6"	47"	95.5"
	1400450	2 cu. yds.	Bulk Salt; 50/50 Salt/Sand mix	2-30 ft.	3/4-Ton & 1-Ton Trucks	Extended	853 lbs.	35"	47"	115.6"	47"	95.5"
	SCH120SS 1400300SS	2.5 cu. yds.	Bulk Salt; 50/50 Salt/Sand mix	2-30 ft.	3/4-Ton & 1-Ton Trucks	Standard	873 lbs.	32.1"	47"	139.7"	47"	120"
	SCH120SSX 1400350SS	2.5 cu. yds.	Bulk Salt; 50/50 Salt/Sand mix	2-30 ft.	3/4-Ton & 1-Ton Trucks	Extended	888 lbs.	32.1"	47"	139.7"	47"	120"
3.5, 4, 4.5 CU. YD. CONVEYOR MUNICIPAL	1400475SS	3.5 cu. yds.	Bulk Salt; 50/50 Salt/Sand mix	4-30 ft.	GVW Chassis of 15,000 - 26,000 lbs.	Standard	1470 lbs.	45.5"	70"	115.9"	70"	96"
	1400475SSH	3.5 cu. yds.	Bulk Salt; 50/50 Salt/Sand mix	4-30 ft.	GVW Chassis of 15,000 - 26,000 lbs.	Standard	1405 lbs.	45.5"	70"	118.8"	70"	96"
	1400500SS	4 cu. yds.	Bulk Salt; 50/50 Salt/Sand mix	4-30 ft.	GVW Chassis of 15,000 - 26,000 lbs.	Standard	1500 lbs.	45.5"	70"	127.9"	70"	108"
	1400500SSH	4 cu. yds.	Bulk Salt; 50/50 Salt/Sand mix	4-30 ft.	GVW Chassis of 15,000 - 26,000 lbs.	Standard	1435 lbs.	45.5"	70"	130"	70"	108"
	1400550SS	4.5 cu. yds.	Bulk Salt; 50/50 Salt/Sand mix	4-30 ft.	GVW Chassis of 17,500 - 26,000 lbs.	Standard	1560 lbs.	45.5"	70"	138.9"	70"	119"
	1400550SSH	4.5 cu. yds.	Bulk Salt; 50/50 Salt/Sand mix	4-30 ft.	GVW Chassis of 17,500 - 26,000 lbs.	Standard	1500 lbs.	45.5"	70"	141.8"	70"	119"
6, 7, 8 CU. YD. AUGER MUNY	1471056SSH	6 cu. yds.	Bulk Salt; 50/50 Salt/Sand mix	4-45 ft.	Minimum GVW of 26,000 lbs.	Adjustable	2655 lbs.	55.25"	87.7"	157"	84"	120"
	1471156SSH	7 cu. yds.	Bulk Salt; 50/50 Salt/Sand mix	4-45 ft.	Minimum GVW of 33,000 lbs.	Adjustable	2855 lbs.	55.25"	87.7"	169"	84"	132"
	1471256SSH	8 cu. yds.	Bulk Salt; 50/50 Salt/Sand mix	4-45 ft.	Minimum GVW of 33,000 lbs.	Adjustable	3055 lbs.	55.25"	87.7"	181"	84"	144"
6, 7, 8, 9 CU. YD. CONVEYOR MUNICIPAL	1450657SSH	6 cu. yds.	Bulk Salt; 50/50 Salt/Sand mix	4-45 ft.	Minimum GVW of 26,000 lbs.	Adjustable	2150 lbs.	56.8"	82"	144.2"	84"	120"
	1425657SSH	6 cu. yds.	Bulk Salt; 50/50 Salt/Sand mix	4-45 ft.	Minimum GVW of 26,000 lbs.	Adjustable	2150 lbs.	56.8"	82"	144.2"	84"	120"
	1406657SSH	6 cu. yds.	Bulk Salt; 50/50 Salt/Sand mix	4-45 ft.	Minimum GVW of 26,000 lbs.	Adjustable	2150 lbs.	56.8"	82"	144.2"	84"	120"
	1450757SSH	7 cu. yds.	Bulk Salt; 50/50 Salt/Sand mix	4-45 ft.	Minimum GVW of 33,000 lbs.	Adjustable	2310 lbs.	56.8"	82"	156.2"	82"	120"
	1425757SSH	7 cu. yds.	Bulk Salt; 50/50 Salt/Sand mix	4-45 ft.	Minimum GVW of 33,000 lbs.	Adjustable	2310 lbs.	56.8"	82"	156.2"	82"	120"
	1406757SSH	7 cu. yds.	Bulk Salt; 50/50 Salt/Sand mix	4-45 ft.	Minimum GVW of 33,000 lbs.	Adjustable	2310 lbs.	56.8"	82"	156.2"	82"	120"
	1450863SSH	8 cu. yds.	Bulk Salt; 50/50 Salt/Sand mix	4-45 ft.	Minimum GVW of 33,000 lbs.	Adjustable	2457 lbs.	62.8"	82"	156.2"	82"	120"
	1425863SSH	8 cu. yds.	Bulk Salt; 50/50 Salt/Sand mix	4-45 ft.	Minimum GVW of 33,000 lbs.	Adjustable	2457 lbs.	62.8"	82"	156.2"	82"	120"
	140863SSH	8 cu. yds.	Bulk Salt; 50/50 Salt/Sand mix	4-45 ft.	Minimum GVW of 33,000 lbs.	Adjustable	2457 lbs.	62.8"	82"	156.2"	82"	120"
	1450969SSH	9 cu. yds.	Bulk Salt; 50/50 Salt/Sand mix	4-45 ft.	Minimum GVW of 35,000 lbs.	Adjustable	2550 lbs.	68.8"	82"	156.2"	82"	120"
	1425969SSH	9 cu. yds.	Bulk Salt; 50/50 Salt/Sand mix	4-45 ft.	Minimum GVW of 35,000 lbs.	Adjustable	2550 lbs.	68.8"	82"	156.2"	82"	120"
	140969SSH	9 cu. yds.	Bulk Salt; 50/50 Salt/Sand mix	4-45 ft.	Minimum GVW of 35,000 lbs.	Adjustable	2550 lbs.	68.8"	82"	156.2"	82"	120"

* Vehicle Application is only a reference. The Gross Vehicle Weight (GVW) of the truck and calculated payload must be evaluated for each application.

SPECIFICATION CHART, continued

	GENERAL							DIMENSIONS				
	PART NO.	CAPACITY	SPREADING MATERIAL	SPREADING WIDTH	VEHICLE APPLICATION*	CHUTE	WT.	OVERALL HEIGHT	OVERALL WIDTH	OVERALL LENGTH	HOPPER WIDTH	HOPPER LENGTH
10-16 CU. YD. CONVEYOR MUNICIPAL	1451057SSH	10 cu. yds.	Bulk Salt; 50/50 Salt/Sand mix	4-40 ft.	Minimum GVW of 35,000 lbs.	Adjustable	3084 lbs.	56.8"	82"	167"	82"	144"
	1421057SSH	10 cu. yds.	Bulk Salt; 50/50 Salt/Sand mix	4-40 ft.	Minimum GVW of 35,000 lbs.	Adjustable	3084 lbs.	56.8"	82"	167"	82"	144"
	1461057SSH	10 cu. yds.	Bulk Salt; 50/50 Salt/Sand mix	4-40 ft.	Minimum GVW of 35,000 lbs.	Adjustable	3084 lbs.	56.8"	82"	167"	82"	144"
	1451163SSH	11 cu. yds.	Bulk Salt; 50/50 Salt/Sand mix	4-40 ft.	Minimum GVW of 38,000 lbs.	Adjustable	3274 lbs.	62.8"	82"	167"	82"	144"
	1421163SSH	11 cu. yds.	Bulk Salt; 50/50 Salt/Sand mix	4-40 ft.	Minimum GVW of 38,000 lbs.	Adjustable	3274 lbs.	62.8"	82"	167"	82"	144"
	1461163SSH	11 cu. yds.	Bulk Salt; 50/50 Salt/Sand mix	4-40 ft.	Minimum GVW of 38,000 lbs.	Adjustable	3274 lbs.	62.8"	82"	167"	82"	144"
	1451369SSH	13 cu. yds.	Bulk Salt; 50/50 Salt/Sand mix	4-40 ft.	Minimum GVW of 38,000 lbs.	Adjustable	3260 lbs.	68.8"	82"	167"	82"	144"
	1421369SSH	13 cu. yds.	Bulk Salt; 50/50 Salt/Sand mix	4-40 ft.	Minimum GVW of 38,000 lbs.	Adjustable	3260 lbs.	68.8"	82"	167"	82"	144"
	1461369SSH	13 cu. yds.	Bulk Salt; 50/50 Salt/Sand mix	4-40 ft.	Minimum GVW of 38,000 lbs.	Adjustable	3253 lbs.	68.8"	82"	167"	82"	144"
	1451257SSH	12 cu. yds.	Bulk Salt; 50/50 Salt/Sand mix	4-40 ft.	Minimum GVW of 44,000 lbs.	Adjustable	3695 lbs.	56.8"	82"	191"	82"	168"
	1421257SSH	12 cu. yds.	Bulk Salt; 50/50 Salt/Sand mix	4-40 ft.	Minimum GVW of 44,000 lbs.	Adjustable	3695 lbs.	56.8"	82"	191"	82"	168"
	1461257SSH	12 cu. yds.	Bulk Salt; 50/50 Salt/Sand mix	4-40 ft.	Minimum GVW of 44,000 lbs.	Adjustable	3688 lbs.	56.8"	82"	191"	82"	168"
	1451363SSH	13 cu. yds.	Bulk Salt; 50/50 Salt/Sand mix	4-40 ft.	Minimum GVW of 44,000 lbs.	Adjustable	3878 lbs.	56.8"	82"	191"	82"	168"
	1421363SSH	13 cu. yds.	Bulk Salt; 50/50 Salt/Sand mix	4-40 ft.	Minimum GVW of 44,000 lbs.	Adjustable	3878 lbs.	56.8"	82"	191"	82"	168"
	1461363SSH	13 cu. yds.	Bulk Salt; 50/50 Salt/Sand mix	4-40 ft.	Minimum GVW of 44,000 lbs.	Adjustable	3872 lbs.	62.8"	82"	191"	82"	168"
	1451469SSH	14 cu. yds.	Bulk Salt; 50/50 Salt/Sand mix	4-40 ft.	Minimum GVW of 48,000 lbs.	Adjustable	3992 lbs.	62.8"	82"	191"	82"	168"
1421469SSH	14 cu. yds.	Bulk Salt; 50/50 Salt/Sand mix	4-40 ft.	Minimum GVW of 48,000 lbs.	Adjustable	3992 lbs.	62.8"	82"	191"	82"	168"	
1461469SSH	14 cu. yds.	Bulk Salt; 50/50 Salt/Sand mix	4-40 ft.	Minimum GVW of 48,000 lbs.	Adjustable	3985 lbs.	62.8"	82"	191"	82"	168"	
UNDER TAILGATE	92440SSA	N/A	Bulk Salt; 50/50 Salt/Sand mix	4-25 ft.	96" wide Dump Bodies	N/A	575 lbs.	31.25"/34.25"	96"	25"	N/A	N/A
	92420A	N/A	Bulk Salt; 50/50 Salt/Sand mix	4-40 ft.	96" wide Dump Bodies	N/A	529 lbs.	31.25"/34.25"	96"	18"	N/A	N/A
	92420SSA	N/A	Bulk Salt; 50/50 Salt/Sand mix	4-40 ft.	96" wide Dump Bodies	N/A	468 lbs.	31.25"/34.25"	96"	18"	N/A	N/A
	92425SSA	N/A	Bulk Salt; 50/50 Salt/Sand mix	4-40 ft.	96" wide Dump Bodies	N/A	460 lbs.	31.25"/34.25"	96"	18"	N/A	N/A
	92430A	N/A	Bulk Salt; 50/50 Salt/Sand mix	4-40 ft.	96" wide Dump Bodies	N/A	551 lbs.	31.25"/34.25"	96"	18"	N/A	N/A
	92430SSA	N/A	Bulk Salt; 50/50 Salt/Sand mix	4-40 ft.	96" wide Dump Bodies	N/A	405 lbs.	31.25"/34.25"	96"	18"	N/A	N/A
REPLACEMENT TAILGATE	9035000	N/A	Bulk Salt; 50/50 Salt/Sand mix	4-25 ft.	1-Ton/Super Duty Dump Bodies	N/A	520 lbs.	36"	73" - 95"	22"	N/A	N/A
	5535000	N/A	Bulk Salt; 50/50 Salt/Sand mix	4-25 ft.	All DumperDogg™ Inserts	N/A	291 lbs.	36"	73" - 95"	21.5"	N/A	N/A

* Vehicle Application is only a reference. The Gross Vehicle Weight (GVW) of the truck and calculated payload must be evaluated for each application.

STANDARD EQUIPMENT				CONSTRUCTION						
TOP SCREEN	COVER	VIBRATOR	INVERTED V	FRAME	HOPPER	POWER SOURCE	FEED MECHANISM	SPINNER	CONTROLLER	MOUNTING
(6) 3/8" Black Powder Coated Steel	N/A	N/A	Standard Stainless Steel	N/A	Stainless Steel	2 Independent Direct Drive Hydraulic Motors	24"W Conveyor, 50:1 Gearbox ratio	20"	N/A	4-Point Tie Down or Tailgate Latch option
(6) 3/8" Black Powder Coated Steel	N/A	N/A	Standard Stainless Steel	N/A	Stainless Steel	2 Independent Direct Drive Hydraulic Motors	24"W Conveyor, 25:1 Gearbox ratio	20"	N/A	4-Point Tie Down or Tailgate Latch option
(6) 3/8" Black Powder Coated Steel	N/A	N/A	Standard Stainless Steel	N/A	Stainless Steel	2 Independent Direct Drive Hydraulic Motors	24"W Conveyor, 6:1 Gearbox ratio	20"	N/A	4-Point Tie Down or Tailgate Latch option
(6) 3/8" Black Powder Coated Steel	N/A	N/A	Standard Stainless Steel	N/A	Stainless Steel	2 Independent Direct Drive Hydraulic Motors	24"W Conveyor, 50:1 Gearbox ratio	20"	N/A	4-Point Tie Down or Tailgate Latch option
(6) 3/8" Black Powder Coated Steel	N/A	N/A	Standard Stainless Steel	N/A	Stainless Steel	2 Independent Direct Drive Hydraulic Motors	24"W Conveyor, 25:1 Gearbox ratio	20"	N/A	4-Point Tie Down or Tailgate Latch option
(6) 3/8" Black Powder Coated Steel	N/A	N/A	Standard Stainless Steel	N/A	Stainless Steel	2 Independent Direct Drive Hydraulic Motors	24"W Conveyor, 6:1 Gearbox ratio	20"	N/A	4-Point Tie Down or Tailgate Latch option
(6) 3/8" Black Powder Coated Steel	N/A	N/A	Standard Stainless Steel	N/A	Stainless Steel	2 Independent Direct Drive Hydraulic Motors	24"W Conveyor, 50:1 Gearbox ratio	20"	N/A	4-Point Tie Down or Tailgate Latch option
(6) 3/8" Black Powder Coated Steel	N/A	N/A	Standard Stainless Steel	N/A	Stainless Steel	2 Independent Direct Drive Hydraulic Motors	24"W Conveyor, 25:1 Gearbox ratio	20"	N/A	4-Point Tie Down or Tailgate Latch option
(6) 3/8" Black Powder Coated Steel	N/A	N/A	Standard Stainless Steel	N/A	Stainless Steel	2 Independent Direct Drive Hydraulic Motors	24"W Conveyor, 6:1 Gearbox ratio	20"	N/A	4-Point Tie Down or Tailgate Latch option
(6) 3/8" Black Powder Coated Steel	N/A	N/A	Standard Stainless Steel	N/A	Stainless Steel	2 Independent Direct Drive Hydraulic Motors	24"W Conveyor, 50:1 Gearbox ratio	20"	N/A	4-Point Tie Down or Tailgate Latch option
(6) 3/8" Black Powder Coated Steel	N/A	N/A	Standard Stainless Steel	N/A	Stainless Steel	2 Independent Direct Drive Hydraulic Motors	24"W Conveyor, 25:1 Gearbox ratio	20"	N/A	4-Point Tie Down or Tailgate Latch option
(6) 3/8" Black Powder Coated Steel	N/A	N/A	Standard Stainless Steel	N/A	Stainless Steel	2 Independent Direct Drive Hydraulic Motors	24"W Conveyor, 6:1 Gearbox ratio	20"	N/A	4-Point Tie Down or Tailgate Latch option
(6) 3/8" Black Powder Coated Steel	N/A	N/A	Standard Stainless Steel	N/A	Stainless Steel	2 Independent Direct Drive Hydraulic Motors	24"W Conveyor, 50:1 Gearbox ratio	20"	N/A	4-Point Tie Down or Tailgate Latch option
(6) 3/8" Black Powder Coated Steel	N/A	N/A	Standard Stainless Steel	N/A	Stainless Steel	2 Independent Direct Drive Hydraulic Motors	24"W Conveyor, 25:1 Gearbox ratio	20"	N/A	4-Point Tie Down or Tailgate Latch option
(6) 3/8" Black Powder Coated Steel	N/A	N/A	Standard Stainless Steel	N/A	Stainless Steel	2 Independent Direct Drive Hydraulic Motors	24"W Conveyor, 6:1 Gearbox ratio	20"	N/A	4-Point Tie Down or Tailgate Latch option
(6) 3/8" Black Powder Coated Steel	N/A	N/A	Standard Stainless Steel	N/A	Stainless Steel	2 Independent Direct Drive Hydraulic Motors	24"W Conveyor, 50:1 Gearbox ratio	20"	N/A	4-Point Tie Down or Tailgate Latch option
(6) 3/8" Black Powder Coated Steel	N/A	N/A	Standard Stainless Steel	N/A	Stainless Steel	2 Independent Direct Drive Hydraulic Motors	24"W Conveyor, 25:1 Gearbox ratio	20"	N/A	4-Point Tie Down or Tailgate Latch option
(6) 3/8" Black Powder Coated Steel	N/A	N/A	Standard Stainless Steel	N/A	Stainless Steel	2 Independent Direct Drive Hydraulic Motors	24"W Conveyor, 6:1 Gearbox ratio	20"	N/A	4-Point Tie Down or Tailgate Latch option
N/A	N/A	N/A	N/A	Stainless Steel	N/A	(2) 12V DC direct drive	6" Auger w/ 3/8" fighting	14"	Variable Speed	Dump Body Mounting Hardware Included
N/A	N/A	N/A	N/A	Powder Coated Carbon Steel	N/A	2 Independent Direct Drive Hydraulic Motors	6" Auger w/ 3/8" fighting	18"	N/A	Dump Body Mounting Hardware Included
N/A	N/A	N/A	N/A	Stainless Steel	N/A	2 Independent Direct Drive Hydraulic Motors	6" Auger w/ 3/8" fighting	18"	N/A	Dump Body Mounting Hardware Included
N/A	N/A	N/A	N/A	Stainless Steel	N/A	2 Independent Direct Drive Hydraulic Motors	6" Auger w/ 3/8" fighting	18"	N/A	Dump Body Mounting Hardware Included
N/A	N/A	N/A	N/A	Powder Coated Carbon Steel	N/A	2 Independent Hydraulic Motors	6" Auger, 3/8" fighting, 5:1 Gearbox ratio	18"	N/A	Dump Body Mounting Hardware Included
N/A	N/A	N/A	N/A	Stainless Steel	N/A	2 Independent Hydraulic Motors	6" Auger, 3/8" fighting, 5:1 Gearbox ratio	18"	N/A	Dump Body Mounting Hardware Included
N/A	N/A	N/A	N/A	Stainless Steel	N/A	(2) 12V DC direct drive	Dual Flight Augers With Mixing Tines	14"	Variable Speed	Dump Body Mounting Hardware Included
N/A	N/A	N/A	N/A	Stainless Steel	N/A	(2) 12V DC direct drive	Dual Flight Augers With Mixing Tines	14"	Variable Speed	Mounting Hardware Included

NOTHING WORKS LIKE A DOGG™



Contact:

saltdogg.com

Your Authorized SaltDogg® Distributor