

2010



Plow Transfer Guide

TABLE OF CONTENTS

OVERVIEW, TIPS AND IMPORTANT INFO	5
SNOWPLOW SWAP OVER CHART	9
TRANSFERRING EXISTING SNOWPLOW TO DIFFERENT VEHICLE	10
VARIOUS WIRING COMBINATIONS	11
RELAY HARNESS SELECTION GUIDE	15
PECULIAR ATTACHMENTS	17
by Kit Number	17
by Vehicle.....	22
4-PORT MODULE LIGHT SYSTEM PARTS LIST	24
3-PORT MODULE LIGHT SYSTEM PARTS LIST	25
QUICK ORDERING GUIDE	26
Peculiar Components	26
Accessories	29
Common Components.....	30
CURRENT VEHICLE & SNOWPLOW WIRING.....	31
COMMON ADAPTERS AND EXTENSION HARNESSES	32
MISC. ADAPTERS AND EXTENSION BRACKETS.....	33
RELAY HARNESS AVAILABILITY.....	34
PUSHPLATE SERVICE PARTS AVAILABILITY.....	35

GLOSSARY

IM – Isolation Module – lighting module that comes in 3- or 4-Port configurations.

MM1 – Minute Mount® system.

MM2 – Minute Mount® 2 system.

Peculiar Light Kit – Light harnesses that are specific to a certain vehicle or headlamp type.

Peculiar Mount Kit – A vehicle-specific frame mount.

SEHP – Solenoid Electric Hydraulic Pack.

TBO – To Be Obsolete; once inventory is used up part will no longer be available.



OVERVIEW, TIPS AND IMPORTANT INFO

Using the Proposed Snowplow Swap Over sheet, gather all of the required information for both the current vehicle and the proposed vehicle. Once you have all of the vehicle information, you can use the following pages to verify whether the specific wiring and vehicle mounts will swap over or not. On the frame mount page, find the current truck and see if the proposed truck falls into the same mount category. If it does, then the plates will swap over; if not, find the proposed truck and order the appropriate mount. Next, find your truck in the wiring section to see if the two trucks are compatible, following the same procedure as the frame mounts. Note that in the relay applications, the headlamps on the snowplow may be different depending on the truck being worked on. If this is the case, both the truck and snowplow may need new harnesses.

Only current product will be shown in eMatch. If your vehicle is not listed, refer to the appropriate pages in this manual to find the necessary part numbers.

The MM1 will not fit on '07/'10 Toyota Tundra. There is a physical interference with the headgear and pushplates. MM2 headgear must be used in this application.

The MM1 will also have an interference issue with the '07/'10 GM trucks. The jack leg or air dam will need extensive modifications for proper fit.

If the snowplow being swapped to another vehicle has INTENSIFIRE™ headlamps, be aware that a headlamp extension bracket (29596) may be needed to avoid interference issues if the grille is part of the hood.

The HB-3/H11 and H13 headlamp connectors are not available in a relay style harness and IM wiring must be used.

Many of the newer vehicles may seem as though they will accept relay wiring, but in most cases will not function properly or may place too much amp draw on the OEM vehicle wiring.

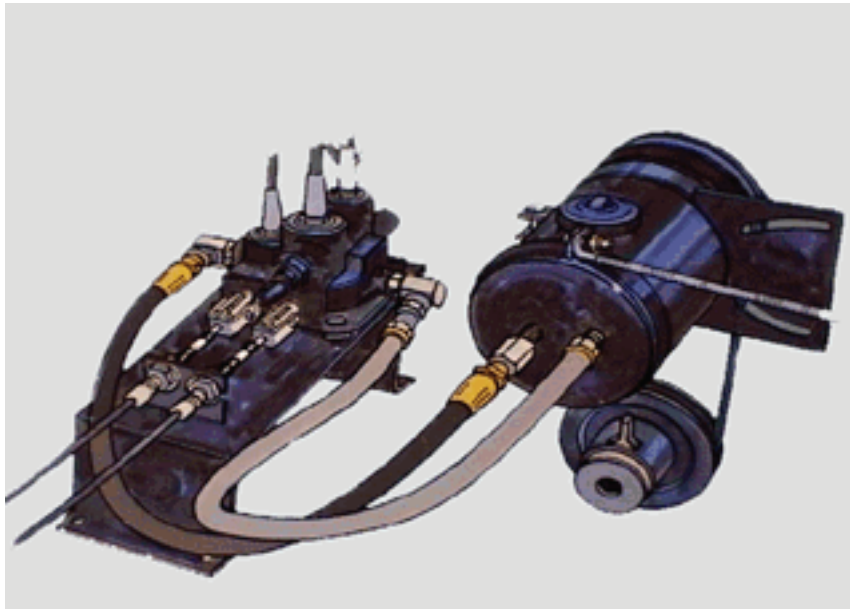
While it is recommended that all vehicles manufactured after 1999 use the IM wiring system, some vehicles can be fitted with relay wiring for a number of years beyond this model year.

All GM/Chevrolet	2002 & Prior
All Ford	2004 & Prior
Dodge 1500	2001 & Prior
Dodge 2500/3500	2002 & Prior
Jeep Wrangler	2004 & Prior

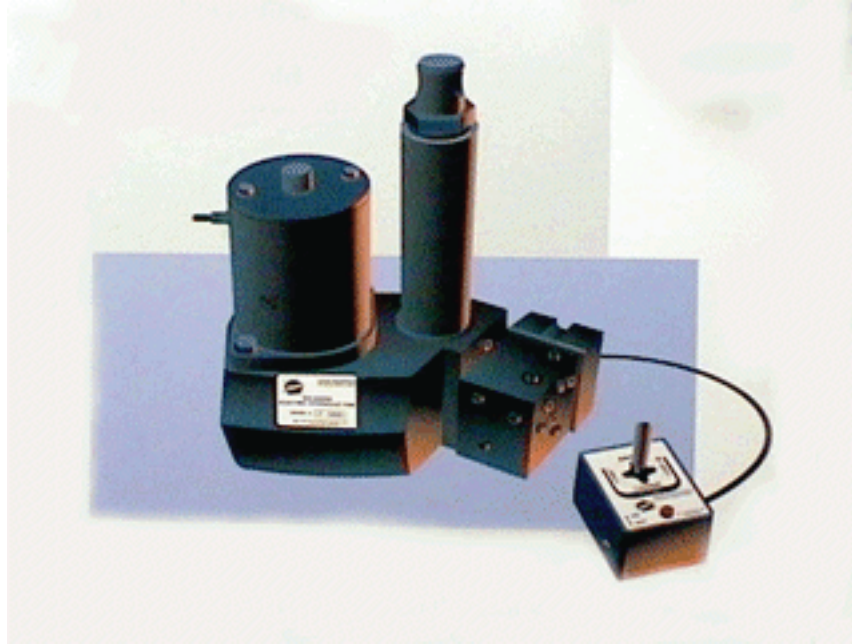
How to Identify Wiring Types and Hydraulics

Since the introduction of the Minute Mount® attachment system, we have introduced four unique wiring systems and five hydraulic systems. The wiring falls into four categories – 2-Plug Relay, 3-Plug 4-Port Isolation Module, 3-Plug 3-Port Isolation Module and 2-Plug Multiplexed Wiring with Isolation Module. There are several different ways to identify which wiring type is being used by looking under the hood of the vehicle for relays or a module or by the number of plugs on the snowplow. Relay wiring systems use hollow pins in the plugs whereas Isolation Module wiring uses solid pins.

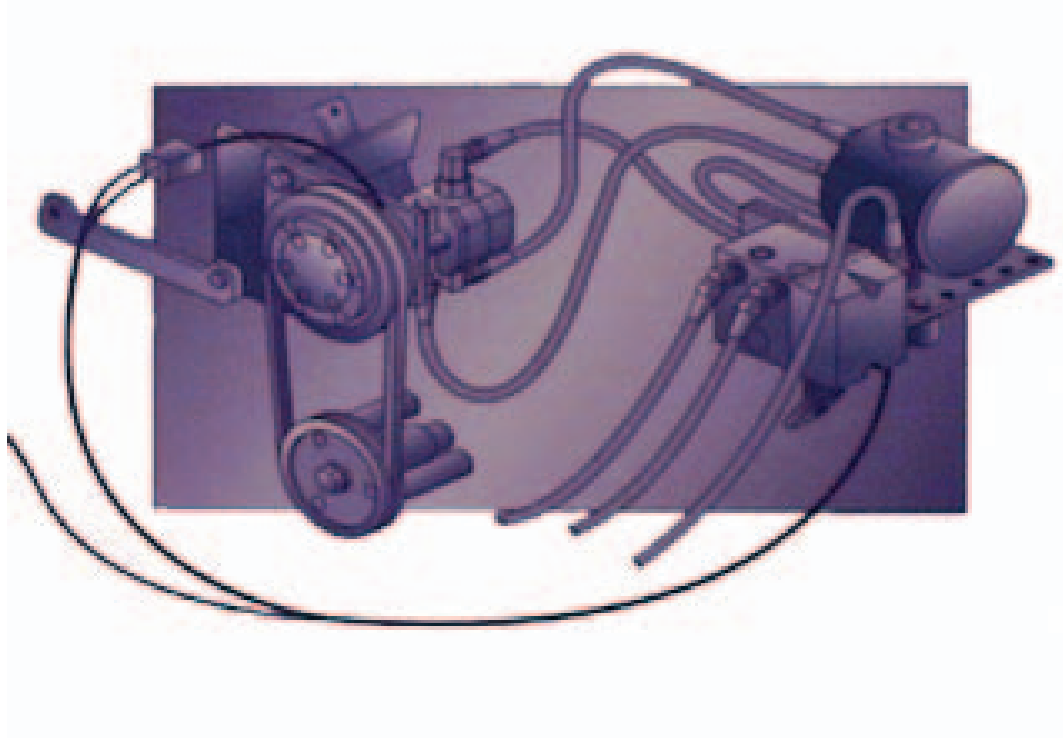
Belt Driven Hydraulics – This system can be identified by the hydraulic components found under the hood of the vehicle. The valve may be under the hood or located on the headgear of the snowplow. There were two different wiring systems used with this style hydraulics, depending on the mounting type. On MM1 snowplows, there was a single 7-pin plug that used relays to automatically transfer the lights between the truck and snowplow. On conventional snowplows, there were two 4-pin harnesses that come through the grille to each headlamp and used a toggle switch in the cab of the truck to transfer the lights from truck to snowplow.



SEHP with Relay Wiring (Solenoid Electric Hydraulic Pak) – This is a self-contained electric over Hydraulic Power Pack. The lift cylinder is incorporated into the actual hydraulic unit. This system used a 2-plug relay system consisting of a 2-pin battery cable and a 9- or 12-pin control harness. The easiest way to identify a relay harness is the hollow pins on the snowplow side. Some later versions also used the 4-Port 3-Plug module wiring systems.

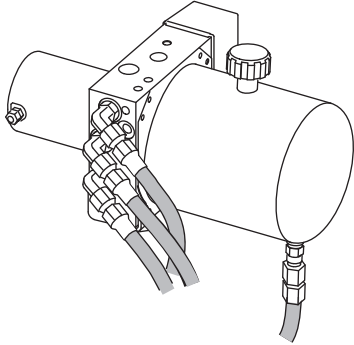


EC/SV – (Electric Clutch Solenoid Valve) – This system used a hydraulic pump that was belt driven and was engaged electrically. When engaged it provided fluid to a separate valve body that was operated by a joystick control. This system used the 2-plug relay system.

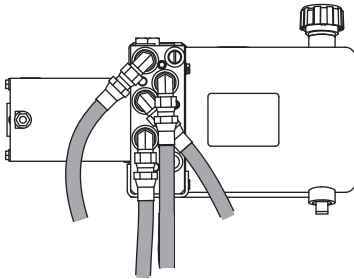


Insta-Act® Hydraulics – This unit can be identified by the lift cylinder being separate from the hydraulic unit. There are three different wiring systems used with this setup: 2-Plug Relay, 3-Plug 4-Port Module Wiring, 3-Plug 3-Port Module Wiring, 2-Plug 4-Port and 2-Plug 3 Port (HT Series™ snowplows).

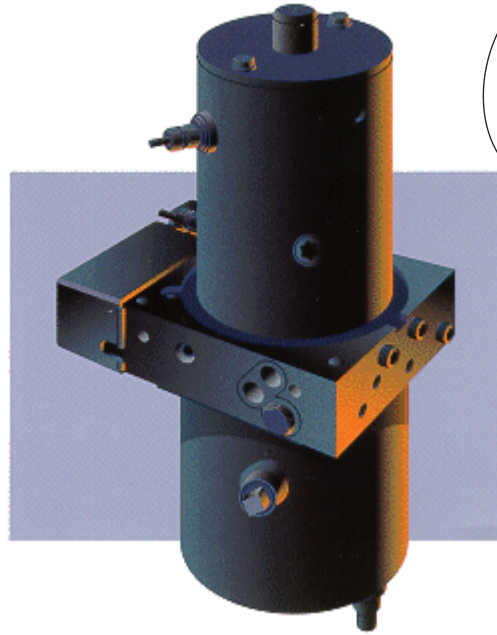
Homesteader™ Hydraulic Units



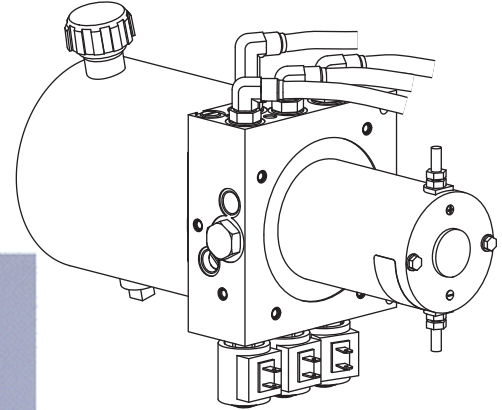
Generation I



Generation II



HT Series™ Hydraulic Unit



Multiplexed Wiring (XtremeV™ & XLS™ Snowplows) – This unit can be identified by the inverted hydraulic unit with the fluid reservoir on top and the 4 piece cover. This system may have either the 2-Plug 4-Port Module Wiring or the 2-Plug 3-Port Module Wiring system.



Proposed Snowplow Swap Over

Use this chart to gather all of the required info needed to swap a snowplow from one truck to another. By filling out this form completely you can be assured that you will have all of the required info without any follow-up calls to the customer or to Fisher Engineering.

	Current Truck	Proposed Truck
Year	<input style="width: 100%;" type="text"/>	<input style="width: 100%;" type="text"/>
Make	<input style="width: 100%;" type="text"/>	<input style="width: 100%;" type="text"/>
Model*	<input style="width: 100%;" type="text"/>	<input style="width: 100%;" type="text"/>
Cab	<input style="width: 100%;" type="text"/>	<input style="width: 100%;" type="text"/>
Bed	<input style="width: 100%;" type="text"/>	<input style="width: 100%;" type="text"/>
Engine	<input style="width: 100%;" type="text"/>	<input style="width: 100%;" type="text"/>
GVW**	<input style="width: 100%;" type="text"/>	<input style="width: 100%;" type="text"/>
FGAWR**	<input style="width: 100%;" type="text"/>	<input style="width: 100%;" type="text"/>
RGAWR**	<input style="width: 100%;" type="text"/>	<input style="width: 100%;" type="text"/>
Headlamp Type***	<input style="width: 100%;" type="text"/>	<input style="width: 100%;" type="text"/>
DRW	<input style="width: 100%;" type="text"/>	<input style="width: 100%;" type="text"/>
Current Wiring Type****	<input style="width: 100%;" type="text"/>	<input style="width: 100%;" type="text"/>

* Model info may also include but not limited to – "All New" or Classic, tire size, trim level, etc.

** Information can be found on the driver-side door jamb – usually a white sticker

*** Can be found on the actual bulb or usually embossed on the headlamp lens

**** Relay or Isolation Module 3- or 4-Port – # of plugs

Transferring Existing Snowplow to Different Vehicle

Current Truck	Proposed Truck
Straight Blade or EZ-V® MM1 with Relay Wiring	<p>Refer to Relay Harness Selection Guide to see if truck is relay compatible. If so, refer to Table 12.</p> <p>* If all of the wiring is removed from original truck, only the peculiar harness will be needed. Refer to peculiar attachment pages or eMatch to see if PP will swap over.</p> <p>If truck is not relay compatible, IM wiring must be used, refer to Table 8 or 9 and Table 1 of the wiring combinations pages.</p> <p>** See MM1 compatibility issues with the '07/'08 GM & Toyota applications on page 5.</p>
Straight Blade or EZ-V MM1 or MM2 with 4-Port Isolation Module Wiring	<p>Refer to Table 1 or 2 on the wiring combinations pages.</p> <p>* If removing all of the wiring from the original truck, refer to 4-port module parts list to order specific #3 & #4 harnesses. If harness for specific lights are not available, refer to the adapters chart – we provide adapters for all of the different headlamp types.</p> <p>** See MM1 compatibility issues with the '07/'08 GM & Toyota applications on page 5.</p>
Straight Blade or EZ-V MM1 or MM2 with 3-Port Isolation Module Wiring	<p>Enter truck data for both vehicles in eMatch to see if the same wiring harness and pushplates can be used. If kits are different, refer to the Quick Ordering Guide pages to find the correct peculiar light harness and pushplates or use the info generated from eMatch.</p> <p>** See MM1 compatibility issues with the '07/'08 GM & Toyota Tundra on page 5.</p>
HT Series™, XtremeV™ and XLS™ MM2 with 3-Port Isolation Module Wiring	<p>Enter truck data for both vehicles in eMatch to see if the same wiring harness and pushplates can be used. If kits are different, refer to the Quick Ordering Guide pages to find the correct peculiar light harness and pushplates or use the info generated from eMatch.</p>

New Truck Side Only Setup – 3-Port Isolation Module System

For a MM1 or MM2 Straight Blade Application

Table 1	Qty	Part Number	Description
	1		Peculiar mount kit (vehicle specific – see eMatch)
	1		Peculiar wiring harness (vehicle specific – see eMatch)
	1		3-Port module (vehicle specific – see eMatch)
	1	26705-1	Vehicle side wiring kit – (includes 26346 EZ-V® vehicle control harness, 63411 vehicle battery cable, 22511 battery cable, 8291 plug cover, 5794K-1 motor relay, 27192K straight blade adapter and 8737 parts bag)
	1	8292 or 9400	Solenoid joystick control or hand-held Fish-Stik® control

For a MM1 or MM2 EZ-V Application

Table 2	Qty	Part Number	Description
	1		Peculiar mount kit (vehicle specific – see eMatch)
	1		Peculiar wiring harness (vehicle specific – see eMatch)
	1		3-Port module (vehicle specific – see eMatch)
	1	26705-1	Vehicle side wiring kit – Isolation Module (includes 26346 EZ-V vehicle control harness, 63411 vehicle battery cable, 22511 battery cable, 8291 plug cover, 5794K-1 motor relay, 27192K straight blade adapter, and 8737 parts bag)
	1	9800 or 9900	Hand-held Fish-Stik or joystick control

For an MM2 HT Series™, XtremeV™ or XLS™ Application

Table 3	Qty	Part Number	Description
	1		Peculiar mount kit (vehicle specific – see eMatch)
	1		Peculiar wiring harness (vehicle specific – see eMatch)
	1		3-Port module (vehicle specific – see eMatch)
	1	42014	Vehicle battery cable for HT Series, XLS and XtremeV snowplows
	1	28587	Vehicle control harness for HT Series, XLS and XtremeV snowplows
	1	49900 or 29800	Solenoid joystick control or hand-held Fish-Stik control
	1	49700 or 49800	Solenoid joystick control or hand-held control for HT Series™ snowplows

How to Wire Truck with Central Hydraulics & Manual Valve Using Isolation Module Wiring

Table 4	Qty	Part Number	Description
	1		Peculiar mount kit (vehicle specific – see eMatch)
	1		Peculiar light kit (vehicle specific – see eMatch)
	1		3-Port module (vehicle specific – see eMatch)
	1	26498	The 26498 harness replaces the vehicle control harness. This harness when wired will provide the module with power, ground and switched acc. power.
	1	61169	Only needed with 8435 headlamps. The plow side will also require a 21294 battery cable in order to provide a ground for the parking lights. 28800 does not require this cable.

How to Wire Truck for Straight Blade, EZ-V®, HT Series™, XtremeV™ and XLS™ Snowplow Using 3-Port Wiring

Table 5	Qty	Part Number	Description
	1		Peculiar mount kit (vehicle specific – see eMatch)
	1		Peculiar light kit (vehicle specific – see eMatch)
	1		3-Port module (vehicle specific – see eMatch)
	1	26705-1	Vehicle side wiring kit – Isolation Module (includes 26345 EZ-V vehicle control harness, 63411 vehicle battery cable, 22511 battery cable, 8291 plug cover, 5794K-1 motor relay, 27192K straight blade adapter, 8737 parts bag and 29047 adapter)
	1	42014	Vehicle battery cable for XLS and XtremeV
	1	28587	Vehicle control harness for XLS and XtremeV
	1	TBD	Depending on blade series you will need to choose from an 8292 or 9400 for straight blades, 9800 or 9900 for EZ-V or 49900 or 29800 for XLS and XtremeV. For HT Series blades, choose from 49800 or 49700, both of which will also operate XLS and XtremeV blades.
Install all wiring with the 10-pin connector of the 26346 EZ-V vehicle control harness and the 4-pin connector of the 28587 vehicle control harness mounted next to the 4-pin connector of the B/C peculiar light harness. To use a straight blade or EZ-V snowplow, plug the 29047 adapter onto the 10-pin connector and plug into B/C harness. To use HT Series, XLS or XtremeV snowplow, plug the 4-pin connector of the 28587 into the 4-pin B/C connector.			

How to Wire an HT Series™, XLS or XtremeV Snowplow on a 4-Port Module Wired Truck

Table 6	Qty	Part Number	Description
	1	42014	Vehicle Battery Cable for HT Series, XLS and XtremeV snowplows
	1	28587	Vehicle Control Harness for HT Series, XLS and XtremeV snowplows
	1	29175	4-Pin and 10-Pin adapter
To use an HT Series, XLS or XtremeV snowplow, remove the existing 10-pin connector from port number 1. Plug the 29175 adapter on the 28587 vehicle control harness and insert in port number 1. To go back to straight blade or EZ-V application, remove the adapter from port number 1 and reinstall the original 10-pin connector.			

**How to Wire Truck for Straight Blade, EZ-V®, HT Series™,
XtremeV™ and XLS™ Snowplow Using 4-Port Wiring**

Table 7	Qty	Part Number	Description
	1		Peculiar mount kit (vehicle specific – see eMatch)
	1		Peculiar light kit (vehicle specific – see eMatch)
	1		4-Port module (vehicle specific – see eMatch)
	1	26705-1	Vehicle side wiring kit – Isolation Module (includes 26346 EZ-V vehicle control harness, 63411 vehicle battery cable, 22511 battery cable, 8291 plug cover, 5794K-1 motor relay, 27192K straight blade adapter, 8737 parts bag and 29047 adapter)
	1	42014	Vehicle battery cable for HT Series, XLS and XtremeV snowplows
	1	28587	Vehicle control harness for HT Series, XLS and XtremeV snowplows
	1	29175	4-Pin to 10-Pin adapter
	1	TBD	Depending on blade series you will need to choose from an 8292 or 9400 for straight blades, 9800 or 9900 for EZ-V or 49900 or 29800 for XLS and XtremeV snowplow. For HT Series blades, choose from 49800 or 49700, both of which will also operate XLS and XtremeV blades.

Plow Side Only Conversions – Relay Wiring to Isolation Module

MM1 or MM2 Straight Blade

Table 8	Qty	Part Number	Description
	1	26347	P/N 26347 converts relay style lights to be isolation module compatible. Use this harness to rewire the snowplow headlamps.
	1	26359	Plow control harness
	****	28800	INTENSIFIRE™ headlamps may also be used. If headgear only has one set of holes on each side, P/N 28330 headlamp adapter brackets will be required.

MM1 or MM2 EZ-V Blade

Table 9	Qty	Part Number	Description
	1	26347	P/N 26347 converts relay style lights to be isolation module compatible. Use this harness to rewire the snowplow headlamps.
	1	26358	Plow control harness
	****	28800	INTENSIFIRE headlamps may also be used. If headgear only has one set of holes on each side, P/N 28330 headlamp adapter brackets will be required.

How to Wire a Straight Blade Insta-Act® Hydraulic Unit on an MM1 or MM2 for Relay Style Wiring

Table 10	Qty	Part Number	Description
	1	8416-1	9-Pin Headlamps
		8417	12-Pin Headlamps
	1	26497	The 26497 is a kit that allows you to extend the wires on a non "-1" 8416 or with 8417 kit. On the MM headgear, the hydraulic unit sits on the passenger's side vs. the center with a SEHP
	1	21294	Plow Battery Cable
			This conversion can be made with all 9- and 12-pin headlamps. Just extend the wires to the necessary distance. Depending on the vehicle, choose one of the headlamp types for that application.

How to Wire an EZ-V® Insta-Act Hydraulic Unit on an MM1 or MM2 for Relay Style Wiring

Table 11	Qty	Part Number	Description
	1	8427	Headlamp Kit, 12-Pin
	1	66624	Plow Battery Cable

How to Wire a Truck for Relay Style Wiring

Table 12	Qty	Part Number	Description
	1		Peculiar Wiring Harness (Vehicle Specific – see KSG)
	1		Peculiar Mount Kit (Vehicle Specific – see eMatch)
	1	22393	Relay Style Vehicle Side Wiring Kit – (includes 66610 vehicle control harness, 66623 vehicle battery cable, 5794K-1 motor relay, 22511 battery cable, 21792K adapter cable and 8737 parts bag)

All GM/Chevrolet	2002 & Prior
All Ford	2004 & Prior
Dodge 1500	2001 & Prior
Dodge 2500/3500	2002 & Prior
Jeep Wrangler	2004 & Prior

Relay Harness Selection Guide

Year	Vehicle	Common Light Kit Belt Drive	Common Light Kit SEHP	Peculiar Light Kit	DRL Adapter
Chevy/GMC					
1984-'93 1984-'94	S-10/S-15, Sonoma Blazer & Jimmy (S-10 Series)	N/A	8416-1	8264	N/A
1995-'96 1994-'96 1994-'96	Blazer & Jimmy (S-10 Series) S-10 w/ZR2 Wide Stance S-10, Sonoma w/o ZR2 Wide Stance Package	N/A	8416 w/o DRL 8417 w/DRL	8270 (2L) 8267 (4L) w/o DRL 8422 (2L) 8268 (4L) w/DRL	N/A 8282
1973-'87 1973-'91	K10, K15, K20, K25, K30, K35 Blazer & Jimmy (Full Size) Suburban 1/2- & 3/4-Ton	8418	8416	8264 (2L) 8271 (4L) (1973-'87) 8272 (4L) 1988-'91	N/A
1988-'89	V30, V35	8418	8416	8264 (2L) 8271 (4L) (1988) 8272 (4L) (1989)	N/A
1988-'01 1988-'95 1992-'97 1995-'99 1992-'99 1992-'99 1991-'00 1990-'00	K1500, K2500, K3500 Classic K2500 w/7200 GVW Blazer Tahoe Yukon, Suburban 1/2-Ton K2500 Suburban w/7200 GVW C3500HD 2WD C3500 2WD	8418	8416	8264 (2L) (1988-'00) 8272 (4L) (1988-'89) 8267 (4L) (1990-'00)	8282 (1996-'97)
1999-'02	K1500, K2500, K3500 "All New"	N/A	8416	26070	N/A

Ford

1991-'94 1992 1993-'97 1987-'91 1992 1992-'04 1992-'04 1992-'99 1995-'97 1992-'04 1992-'97 1992-'97 1999-'04	Explorer Ranger Ranger Bronco, F-150, F-250, F-350 Bronco F-150 F-250 F-250LD F-250 Supercab F-350 F Super Duty F-350 2WD F-450, F-550	N/A 8418	 8416	 8269	 N/A
--	--	---------------------	--------------------------	--------------------------	-------------------------

Refer to the Current Relay Harness Chart to see if harness is still available (see page 33).

Year	Vehicle	Common Light Kit Belt Drive	Common Light Kit SEHP	Peculiar Light Kit	DRL Adapter
------	---------	-----------------------------	-----------------------	--------------------	-------------

Dodge

1997-'98	Dakota	N/A	8416	21748	N/A
1991-'96	Dakota	8418		8270-Downline	
				8903B-Upline	
1972-'88	W150			8283	
1974-'93	Ramcharger				
1972-'93	W250, W350				
1992-'93	W150			8903	
1994-'98	W1500				
1994-'98	W2500				
1994-'98	W3500				
1995-'98	W2500, W3500 Extended Cab				
1999-'01	4 Light Sport Package	N/A	26026		
1999-'01	1500, 2500, 3500		26014		

Foreign/Compact

1991-'94	Mazda Navajo	N/A	8416	8269B	N/A
1994-'97	Mazda B-3000, B-4000		8417	20525B (1986.5-'87 & 1990-'95) 20526B (1998-'89)	
1986.5-'95	Nissan 4X4				
1986.5-'95	Nissan Pathfinder	8417	8265 20527B (1992-'95 4-Runner Only)		
1986-'95	Toyota 4X4				
1995-'97	Toyota Tacoma				
1986-'95	Toyota 4-Runner				

Commercial Series

1990-'96	Chevy Kodiak GMC Topkick	N/A	8430-1	20710	N/A
1989-'94	International 4600			21331	
1989-'04	4700, 4800, 4900				
1985-'99	Ford F-700, F-800			21511	

Refer to the Current Relay Harness Chart to see if harness is still available.

PECULIAR ATTACHMENTS BY KIT NUMBER

Minute Mount®/Minute Mount® 2 Systems

General Motors		
Part	Years	Applications
7119**	1984-'94	('84-'94) S-10, Blazer/Jimmy — ('84-'93) S-15, Sonoma
7125	1988-'00	('97-'00) K2500/K2500HD & K3500 Classic — ('88-'96) K3500 & K2500HD w/8600 GVW ('92-'99) 2500 Suburban w/8600 GVW
7129	1973-'91	('73-'87) K-10/K-15, K-20/K-25, K-30/K-35 — ('73-'91) Full-Size Blazer/Jimmy ('73-'91) 1550/2500 Suburban — ('88-'99) V30 & V35 w/Leaf Springs
7138	1988-'00	('97-'00) Suburban K1500 Classic — ('97-'99) K1500 Classic — ('97-'98) K1500 W/T Classic ('95-'99) Tahoe/Yukon — ('92-'95) K2500 Suburban w/7200 GVW — ('92-'96) 1/2 Ton Suburban ('92-'94) Full-Size Blazer — ('88-'96) K1500 — ('88-'95) K2500 w/7200 GVW
7139B**	1994-'96	('95-'96) S-10, Blazer/Jimmy — ('94-'96) S-10, Sonoma w/o ZR2
7142**	1994-'96	S-10 & Sonoma w/ ZR2 Wide Stance Suspension
7144	1991-'00	C3500HD 2WD Str. Axle Frame
7146-1**	1990-'02	('90-'96) Kodiak/Topkick — ('97-'02) 4500/5500 T-50
7148**	1990-'00	('97-'00) C3500 Classic — ('90-'96) C3500 2WD w/ Coil Springs DRW
7154-1**	1997-'02	Topkick/Kodiak (C5500/6500/7500)
7160	1999-'04	('00-'04) 1500 Tahoe/Yukon — ('02-'03) 1500 Yukon Denali XL ('02) Sierra Denali w/4WS — ('99-'02) K1500 Silverado/All New Sierra
7161**	1999-'03	('00-'03) Suburban/Yukon XL 2500 — ('99-'02) K2500/2500HD & K3500 Silverado & Sierra
Replaced by 7169		
7168	2003-__	('03-'07) K1500 Silverado/Sierra — ('03-'04) Sierra Denali w/4WS ('03) 1500 Tahoe/Yukon
7169	1999-__	('03-__) K2500/K2500HD Silverado/Sierra — ('03-__) K3500 & C3500 Silverado/Sierra ('03-'04) 2500 Suburban/Yukon — ('02-'04) 2500 Avalanche — ('03) K1500HD Silverado/Sierra
7171	2003-'09	C4500/5500 Chevy & GMC (4X2)
7175	2004-__	('04-__) Colorado Z71 & Z85 — ('02-__) Canyon Z71 & Z85
7177	2005-'09	C4500/5500 Chevy & GMC (4X4)
7182	2007-__	K1500 "All New" Silverado/Sierra
7192	2010	2500/3500
** Kit is no longer available.		

Homesteader™ Personal Plow

General Motors		
Part	Years	Applications
1503	1995-'04	S-10/Sonoma, Blazer/Jimmy (4X4)
1523	1999-__	('99-'06) K1500 — ('00-'06) Tahoe/Yukon (4X4), Silverado/Sierra 2007
1533-1	2002-__	Envoy/Trailblazer (4X4)
31543-1	2004-__	Canyon/Colorado (4X4)
31553	2007-__	K1500 "All New" Silverado/Sierra, Tahoe/Yukon, 1500 Suburban/Yukon XL

NOTE: This list is to be used as an ordering guide and reference only. It is not a complete list of recommended snowplow applications and should not take the place of the Kit Selection Guide/eMatch.

PECULIAR ATTACHMENTS BY KIT NUMBER

Minute Mount®/Minute Mount® 2 Systems

Ford		
Part	Years	Applications
7120B**	1991-'94	('91-'94) Explorer — ('92) Ranger 4X4
7123B**	1993-'96	Ranger 4X4
7126	1992-'97	('92-'97) F-350 4X2 — ('92-'96) F150 — ('92) Bronco 4X4
7128	1992-'97	('92-'97) F-250 w & w/o Sway Bar — ('92-'97) F-350 & F Super Duty
7131**	1987-'91	F-150 & Bronco 4X4
7132	1987-'91	F-250 w & w/o Sway Bar & F-350 4X4
7150	1997-'04	('04) F-150 Heritage 4X4 — ('98-'03) F-150 4X4 — ('00-'01) F-150HD 4X4 ('97-'99) F-250 w/7200 GVW
7152-1**	1995-'99	F-700 & F-800
7156-1		Universal Kit
7159-2	1999-'04 ¹	('99-'04 ¹) F-250 (4X4)/F-350 (4X4)/F-450/F-550 Super Duty — ('00-'04 ¹) Excursion
7164	2000-'03	F-650
7172	2004-'07	F-650 (4X2) & International 4000 Series (4X2)
7173	2004 ²	F-250/F-350/F-450/F-550 Super Duty & Excursion
7174	2004-'08	F-150 (4X4)
7176	2005-'07	F-250 (4X4)/F-350 (4X4)/F-450/F-550 Super Duty
7183	2008-'10	F-250/350/450/550 Super Duty
7183-1	2008-'11	F-250/350/450/550 Super Duty Gas & Diesel
7187	2008—	F-650
** Kit is no longer available. ¹ Early Production (Up to 12/01/2003) ² Late Production (After 12/01/2003)		

Homesteader™ Personal Plow

Ford		
Part	Years	Applications
1203	1995—	('98—) Ranger — ('95-'01) Explorer 4X4 — ('01-'04) Explorer Sport Trac
1213-1	2002-'03	Explorer (4 Door)
1223	1997-'04	('97-'04) F-150 Heritage — ('97-'02) Expedition 4X4
1233	2004—	F-150 New 4X4
31243	2007—	Sport Trac
31253	2009	F-150
31263	2010	Ranger

NOTE: This list is to be used as an ordering guide and reference only. It is not a complete list of recommended snowplow applications and should not take the place of the Kit Selection Guide/eMatch.

PECULIAR ATTACHMENTS BY KIT NUMBER

Minute Mount®/Minute Mount® 2 Systems

Dodge		
Part	Years	Applications
7124**	1972-'93	('72-'88) W150 — ('92-'93) W150 — ('72-'93) W250/W350 — ('74-'88) Ramcharger 4X4
7130**	1991-'96	Dakota 4X4
7137**	1994-'96	W1500 w/AHH & 6400 GVW — W2500 w/AHH & 7500 GVW 4X4
7141B**	1994-'96	W2500 w/AHD & 8800 GVW — W3500 w/AHD & 10500 GVW
7149**	1997	W3500 Chassis Cab
7153**	1997	W2500 w/AHD & 8800 GVW — W3500 w/AHD & 10500 GVW
7155	1997-'99	Dakota 4X4
7157	1994-'02	('94-'96) 1500/2500/2500LD/2500 w/Ext. Cab & 3500 — ('95-'96) 3500 w/Ext. Cab ('97) Ram 2500/3500 — ('97-'01) Ram 1500 — ('98-'02) Ram 2500HD/3500
7165	2000-'04	('00-'04) Dakota — ('01-'03) Durango 4X4
7167	2002-'05	Ram 1500 & 1500 SLT 4X4
7170-1**	2003-'06	Ram 2500 & 3500 (V8 & Diesel – Non-Laramie)
7170-2	2003-__	Ram 2500 & 3500 (All)
7178	2005-__	Dakota 4X4
7180	2006-'08	Ram 1500
7186	2008-__	4500/5500
7189	2009-'10	Ram 1500
7191	2010	Ram 2500 & 3500
** Kit is no longer available.		

Homesteader™ Personal Plow

Dodge		
Part	Years	Applications
33903	2004-__	('04-'08) Durango — ('05-__) Dakota
33913	2006-'08	Ram 1500
33923	2009	Ram 1500

NOTE: This list is to be used as an ordering guide and reference only. It is not a complete list of recommended snowplow applications and should not take the place of the Kit Selection Guide/eMatch.

PECULIAR ATTACHMENTS BY KIT NUMBER

Minute Mount®/Minute Mount® 2 Systems

International		
Part	Years	Applications
7151-2	1989-'04	('89-'04) 4600 Series — ('89-'00) 4700/4800/4900 Series
7172	2001-'07	4000 Series
7187	2008-__	IHC 4000
Jeep		
Part	Years	Applications
7163-1	1997-'06	Wrangler
7193	2007-'10	Wrangler 4X4
Mazda		
Part	Years	Applications
7120B**	1991-'94	Navajo
7123B**	1994-'96	B3000/B4000
Mitsubishi		
Part	Years	Applications
7162-1**	1998-'04	FG Series
7179	2005-'08	FG Series
Nissan		
Part	Years	Applications
7143**	1986.5-'95	4X4 Pickup & Pathfinder
Toyota		
Part	Years	Applications
7122B**	1986-'95	4X4 Pickup & 4-Runner
7147**	1995-'97	Tacoma
7158**	1995-'00	Tacoma
7166	1998-'04	Tacoma
7185	2007-__	Tundra
Sterling		
Part	Years	Applications
7186	2008-__	Sterling Bullet
** Kit is no longer available.		

NOTE: This list is to be used as an ordering guide and reference only. It is not a complete list of recommended snowplow applications and should not take the place of the Kit Selection Guide/eMatch.

PECULIAR ATTACHMENTS BY KIT NUMBER

Homesteader™ Personal Plow

Jeep		
Part	Years	Applications
3713-1**	2002–__	Liberty
3713-2	2002–__	Liberty
3723	1997–__	Wrangler
42021	2005–__	Grand Cherokee
42113-1	2007–'10	Wrangler 4X4
Mazda		
Part	Years	Applications
1203	1999–'09	B3000/4000
Nissan		
Part	Years	Applications
31303	2004–__	Titan
31313	2005–__	Frontier
Toyota		
Part	Years	Applications
2303	2000–'06	Tundra
2313	1995–'04	Tacoma
32323	2005–__	Tacoma
32333	2007–__	Tundra
** Kit is no longer available.		

NOTE: This list is to be used as an ordering guide and reference only. It is not a complete list of recommended snowplow applications and should not take the place of the Kit Selection Guide/eMatch.

PECULIAR ATTACHMENTS BY VEHICLE

Minute Mount®/Minute Mount® 2 Systems

General Motors								
Model	Years	Part	Model	Years	Part	Model	Years	Part
Avalanche	2002-'04	7169	2500/3500	2010	7192	Suburban	1973-'91	7129
Blazer/Jimmy	1984-'94	7119**	K3500	1988-'00	7125		1992-'99	7125
	1973-'91	7129	K3500 Silverado/ Sierra	1999-'02	7161**		1992-'95	7138
	1992-'94	7138		2003-__	7169		1997-'00	7138
	1994-'96	7139**	C3500	1990-'00	7144		2000-'03	7161**
Canyon/Colorado	2004-__	7175		1990-'00	7148**	2000-'04	7169	
"K" Series	1973-'87	7129		1997-'00	7148**	Topkick/Kodiak	1990-'96	7146-1**
K1500 Classic	1988-'99	7138B	4500/5500 T40	1997-'02	7156-1		1997-'02	7154-1**
K1500 Silverado/ Sierra	1999-'02	7160	4500/5500 T50	1997-'02	7146-1	Tahoe/Yukon	1995-'99	7138
	2003-'07	7168	C4500/5500	2003-'09	7171		2000-'04	7160
K1500 HD	2003-'07	7169	C4500/5500	2005-'09	7177		2000-'03	7161**
K1500 "All New" Silverado/Sierra	2007-__	7182	S-10/Sonoma	1984-'94	7119**		2004-'06	7168
K2500	LD 1988-'95	7138		1994-'96	7139**		2000-'04	7169
	HD 1988-'00	7125		1994-'96	7142**	V30 & V35	1988-'89	7129
K2500 Silverado/ Sierra	1999-'02	7161**	S-15	1984-'93	7119**			
	1999-__	7169		Replaced by 7169				

** Kit is no longer available.

Homesteader™ Personal Plow

General Motors								
Model	Years	Part	Model	Years	Part	Model	Years	Part
Blazer/Jimmy	1995-'03	1503	K1500 "All New" Silverado/Sierra, Tahoe/Yukon, 1500 Suburban/ Yukon XL/ Avalanche 1500	2007-__	31553	Canyon/Colorado	2004-__	31543-1
Tahoe/Yukon	2000-'06	1523				Envoy/Trailblazer	2002-__	1533-1
Silverado/Sierra 1500	1999-'06					S-10/Sonoma	1995-'03	1503
Silverado/Sierra Classic	2007							
K1500	1999-'06							

NOTE: This list is to be used as an ordering guide and reference only. It is not a complete list of recommended snowplow applications and should not take the place of the Kit Selection Guide/eMatch.

PECULIAR ATTACHMENTS BY VEHICLE

Minute Mount®/Minute Mount® 2 Systems

Ford								
Model	Years	Part	Model	Years	Part	Model	Years	Part
Bronco	1987-'91	7131	F-250	1987-'91	7132B	F-250/350/450/550 Super Duty	1999-'04	7159-2
	1992	7126B		1992-'96	7128B		2004	7173
Excursion	2000-'04	7159-2		1997-'99	7150		2005-'07	7176
	2004	7173	F-250 HD	1997	7128B	F-250/350/450/550 Super Duty 4X4	2008-'10	7183
Explorer	1991-'94	7120B**	F Super Duty	1992-'97	7128B	F-650	2000-'03	7164
Ranger	1992	7120B**	F-250 Super Duty	1999-'04	7159-2		2000-'03	7156-1
	1993-'96	7123B**		2004	7173		2004	7172
F-150	1987-'91	7131**		2005-__	7176	2008-__	7187	
	1992-'96	7126B	F-350	1992-'97	7126B	F-700/800	1995-'99	7152-1**
	1998-'04	7150		1992-'97	7128B		1996-'99	7156-1
	2004-'08	7174		1987-'91	7132B			

Dodge								
Model	Years	Part	Model	Years	Part	Model	Years	Part
Dakota	2005-__	7178	W250	1972-'93	7124**	2500	2003-__	7170-2
	2000-'04	7165	W350	1972-'93	7124**		2003-'06	7170-1
	1997-'99	7155	1500	2006-'08	7180		1994-'02	7157
	1991-'96	7130B**		2002-'05	7167		1997	7153**
Durango	2001-'03	7165		1994-'01	7157	1994-'96	7137**	
Ramcharger	1974-'88	7124**	1994-'96	7137**	1994-'96	7141B**		
W150	1992-'93	7124**	1500 Mega Cab	2006-'08	7170-2	2010	7191	
	1972-'88	7124**			3500	2003-__	7170-2	
				2003-'06		7170-1**		
						1994-'02	7157	
						2010	7191	

** Kit is no longer available.

Homesteader™ Personal Plow

Ford								
Model	Years	Part	Model	Years	Part	Model	Years	Part
Explorer	1995-'04	1203	Expedition	1997-'02	1223	F-150	1997-'03	1223
	2002-'03	1213-1	Ranger	1998-__	1203		2004-'08	1233
Sport Trac	2007-__	31243	Ranger	2010	31263		2009-__	31253

Dodge								
Model	Years	Part	Model	Years	Part	Model	Years	Part
Durango	2004-'08	33903	Dakota	2005-'10	33903	Ram 1500	2006-'08	33913
							2009-__	33923

NOTE: This list is to be used as an ordering guide and reference only. It is not a complete list of recommended snowplow applications and should not take the place of the Kit Selection Guide/eMatch.

HARNESS KIT & ADAPTER KIT 4-PORT ISOLATION MODULE LIGHT SYSTEM

Plug-In Harness, Plug-In Harness Extension, and Plug-In Adapter Kits		Qty																			
Part	Description	8436	8437-1	8438	8439	8442	8443	26640	26641-1	27480-1	27780	27890	27968	28027-2	28028	28400	28555	28860	29420-1	29458	
26638	Plug-In Harness, 7-Pin Connector						1														
26354	Plug-In Harness, HB-1 or HB-5, Long	1																			
26360-1	Plug-In Harness, HB-3 & HB-4-A, Long		1							1											
26352	Plug-In Harness, HB-3 & HB-4-B, Long			1							1										
26353	Plug-In Harness, 2B or 2D or HB-2, Long				1																
26370	Plug-In Harness, HB-5 & HB-1, Long					1															
28242	Plug-In Harness, H13, Long															1					
27886	Plug-In Harness, 5-Pin Connector, Long											1									
28030	Plug-In Harness, 4-Position, Long														1						
26349	Plug-In Harness, HB-1 or HB-5, Short	1																			
26361-1	Plug-In Harness, HB-3 & HB-4-A, Short		1							1											
26351	Plug-In Harness, HB-3 & HB-4-B, Short			1							1										
26356	Plug-In Harness, 2B or 2D or HB-2, Short				1																
26372	Plug-In Harness, HB-5 & HB-1, Short					1															
28244	Plug-In Harness, H13, Short															1					
27885	Plug-In Harness, 5-Pin Connector, Short											1									
28032	Plug-In Harness, 4-Position, Short														1						
26357	Vehicle Lighting Harness – 11-pin	1	1	1	1	1	1			1	1	1			1	1					
26400	Isolation Module – White Label	1		1	1	1	1			1		1			1	1					
27781	Isolation Module – Light Green Label		1								1										
20681	Battery Cable – 50"						1		1										1		
21563	Battery Cable – 90"							1													
26636	Extension Harness – 100"							1													
22381	Battery Adapters, Side Terminal		1	1						1	1				1						
26642	Adapter Cable – HB-5 Female to 1A/2A								2												
26643	Adapter Cable – HB-5 Male to 1A/2A								2												
27968	2B to 2E Adapter Kit (2 Adapters Included)												1								
29420-1	H13 to HB-3/H11 Adapter Kit (2 Adapters Included)																			1	
29458	HB-4 to H11 Connector Kit																				1
28027-2	In-Line Adapter													1							
28858	Plug-In Adapter w/Park																			1	
28859	Plug-In Adapter w/o Park																			1	
28555	Adapter Kit																1				
64128	Motor Relay Bracket											1									
26395	Parts Bag – Configuration Plug (back)	1		1	1	1	1			1		1			1	1					
26396	Parts Bag – Dust Cover (back)		1								1										
26661	Parts Bag – Cable Clamp Kit (back)							1													
26662	Parts Bag – Motor Relay Bracket (back)						1	1													
27921	Bolt Bag											1									
26273	Dodge Sport Package Adapter Kit					1															
21651	Grommet #2, Rubber							2													

HARNESS KIT & ADAPTER KIT 3-PORT ISOLATION MODULE LIGHT SYSTEM

Part	Description	Qty														
		29048	29049	29050	29051	29052	29053	29054	29400-3	29234	29235	28027-2	27968-1	26641-1	28860-1	29056-1
28253	Plug-In Harness, HB-3 & HB-4	1														
28986	Plug-In Harness, H13		1													
28930	Plug-In Harness, HB-5 & HB-1			1												
28464	Plug-In Harness, 2B or 2D or HB-2				1											
28924	Plug-In Harness, 4-Pin Connector					1										
29058	Plug-In Harness, 5-Pin Connector						1									
29270	Plug-In Harness, 7-Pin Connector							1								
29499	Plug-In Harness, HB-3 & H11								1							
26357	Vehicle Lighting Harness – 11-pin	1	1	1	1	1	1	1	1							
20681	Battery Cable – 50"							1						1	1	
21563	Battery Cable – 90"						1									
22381	Battery Adapters, Side Terminal	1				1										
29234	Plug-In Adapter – 5-Pin, 2B/2D (2 Adapters Included)								1							
29235	Plug-In Adapter – 5-Pin, HB-5 (2 Adapters Included)									1						
28027-2	In-Line Adapter							1			1					
27968-1	2B to 2E Adapter Kit (2 Adapters Included)											1				
26641-1	Adapter Cables – HB-5 to 1A/2A (4 Adapters Included)													1		
28860-1	Plug-In Adapters (2 Adapters Included)														1	
29056-1	Adapter Harness – HB-1															1
29047	Adapter – 3-Port to 26345/26346 Veh. Control Harness	1	1	1	1	1	1	1	1							
21651	Grommet #2, Rubber								1	1						
–	Splices, Heatshrink Tubing, Reclosable Fasteners & Dielectric Grease	1	1	1	1	1	1	1	1							
29861-1	Vehicle Lighting Harness – 11-pin w/Relay Assy (Incl. 26357 [1] & 28027-2 [1])															

FISHER® Snowplows – Quick Ordering Guide – Peculiar Components

Mount Part #	Year(s)	Vehicle Models	3-Port Module	3-Port Harness Kit	Harness Adapter	Headlamp Style	Relay Harness
Dodge							
7155	1977-'99	Dakota 4X4	29060 - Non DRL; 29070 - DRL; 29070-1	29050	-	HB-5	21748
7157	1994-'01	Ram 1500 4X4	29060 - Non DRL; 29070 - DRL; 29070-1	29050	-	HB-1	(1992-98 HB-1) 8903
7165	1994-'02	Ram 2500 & 3500 4X4	29060 - Non DRL; 29070 - DRL; 29070-1	29050	29056-1	HB-5/HB-1	1999-04
7167	2000-'03	Durango 4X4	29060 - Non DRL; 29070 - DRL; 29070-1	29050	-	HB-5	
7170-2	2000-'04	Dakota 4X4	29060 - Non DRL; 29070 - DRL; 29070-1	29050	-	HB-5	
7178	2002-'05	Ram 1500 4X4	29060 - Non DRL; 29070 - DRL; 29070-1	29050	-	HB-5	
7180	2003-'09	Ram 2500, 3500 4X4	29060 - Non DRL; 29070 - DRL; 29070-1	29050/29049	-	HB-5/H13	
7186	2006-'09	Ram 1500 Meg Cab 4X4	29060 - Non DRL; 29070 - DRL; 29070-1	29049	-	H13	
7189	2005-'10	Dakota 4X4	29060 - Non DRL; 29070 - DRL; 29070-1	29049	-	H13	
7191	2006-'08	Ram 1500 Regular Cab 4X4	29060 - Non DRL; 29070 - DRL; 29070-1	29049	-	H13	
33903	2008-'10	Ram 4500, 5500 4X4, 4X2	29060 - Non DRL; 29070 - DRL; 29070-1	29049	-	H13	
33913	2009-'10	Ram 1500	29070-1	29049	-	H13	
33923	2009-'10	Ram 1500	29070-1	29049	28027-2	HB3/H11	
	2010	Ram 2500, 3500	29070-1	29049	-	H13	
	2004-'09	Aspen, Durango 4X4	29060 - Non DRL; 29070 - DRL; 29070-1	29049	28027-2	HB3/H11	
	2005-'10	Dakota 4X4	29060 - Non DRL; 29070 - DRL; 29070-1	29049	-	H13	Homesteader™
	2006-'08	Ram 1500 Regular Cab 4X4	29060 - Non DRL; 29070 - DRL; 29070-1	29049	-	H13	Homesteader
	2009-'10	Ram 1500	29060 - Non DRL; 29070 - DRL; 29070-1	29049	-	H13	Homesteader
	2009-'10	Ram 1500	29060 - Non DRL; 29070 - DRL; 29070-1	29049	-	H13	Homesteader
	2009-'10	Ram 1500	29070-1	29049	28027-2	HB3/H11/H13	Homesteader
Toyota							
7166	1998-'04	Tacoma 4X4	29060 - Non DRL; 29070 - DRL; 29070-1	29051	-	HB-2	
7185	2007-'10	Tundra 4X4	29060 - Non DRL; 29070 - DRL; 29070-1	29400-2	-	HB-3/HB-11	
2303	2000-'06	Tundra 4X4	29060 - Non DRL; 29070 - DRL; 29070-1	29051	-	HB-2	Homesteader
2313	1995 1/2-'04	Tacoma 4X4	29060 - Non DRL; 29070 - DRL; 29070-1	29051	-	2B/HB-2	Homesteader
32323	2005-'10	Tacoma 4X4	29060 - Non DRL; 29070 - DRL; 29070-1	29051	-	HB-2	Homesteader
32333	2007-'10	Tundra 4X4	29060 - Non DRL; 29070 - DRL; 29070-1	29400-2	-	HB-3/HB-11	Homesteader
International							
7172	2001-'07	4000 Series	29060 - Non DRL; 29070 - DRL; 29070-1	29053	29235	HB-5	
7187	2008-'10	4000 Series	29060 - Non DRL; 29070 - DRL; 29070-1	29053	29234	2B	
			29060 - Non DRL; 29070 - DRL; 29070-1	29053	29235	HB-5	
			29060 - Non DRL; 29070 - DRL; 29070-1	29053	29234	2B	
Jeep							
7163-1	1997-'04	Wrangler 4X4	29060 - Non DRL; 29070 - DRL; 29070-1	29051	-	2D	
7193	2007-'10	Wrangler 4X4	29070-1	29049	-	H13	MM2
3713-2	2002-'07	Liberty 4X4	29060 - Non DRL; 29070 - DRL; 29070-1	29050	-	HB-5	Homesteader
3723	2008-'09	Liberty 4X4	29060 - Non DRL; 29070 - DRL; 29070-1	29049	-	H13	Homesteader
42113-1	1997-'06	Wrangler 4X4	29060 - Non DRL; 29070 - DRL; 29070-1	29051	-	2D	Homesteader
42021	2007-'10	Wrangler 4X4	29060 - Non DRL; 29070 - DRL; 29070-1	29049	-	H13	Homesteader
	2005-'10	Grand Cherokee 4X4	29060 - Non DRL; 29070 - DRL; 29070-1	29048	28027-2	HB-3/HB-4	Homesteader

FISHER® Snowplows – Quick Ordering Guide – Peculiar Components

Mount Part #	Year(s)	Vehicle Models	3-Port Module	3-Port Harness Kit	Harness Adapter	Headlamp Style	Relay Harness
Mitsubishi							
7179	2005-'10	FG 4X4	29060 - Non DRL; 29070 - DRL; 29070-1	29050	28860-1	HB-5	
Nissan							
31303	2004-'10	Titan 4X4	29060 - Non DRL; 29070 - DRL; 29070-1	29048	28027-2	HB-3/HB-4	Homesteader™
31313	2005-'10	Frontier/Pathfinder 4X4	29060 - Non DRL; 29070 - DRL; 29070-1	29050	-	HB-5	Homesteader
Ford							
7126	1992-'96	F-150/Bronco 4X4	29060 - Non DRL; 29070 - DRL; 29070-1	29050	-	HB-5	
7128	1992-'97	F-250, F-350, F-SD 4X4	29060 - Non DRL; 29070 - DRL; 29070-1	29050	-	HB-5	
7132	1987-'91	F-250/F-350 4X4	29060 - Non DRL; 29070 - DRL; 29070-1	29051	-	2B	
7150	1997-'04	F-150 (Heritage) 4X4	29060 - Non DRL; 29070 - DRL; 29070-1	29050	-	HB-1	
1997-'99		F-250LD 4X4	29060 - Non DRL; 29070 - DRL; 29070-1	29050	-	HB-5	
7159-2	1999-'04 (Early)	F-250-550 SD 4X4	29060 - Non DRL; 29070 - DRL; 29070-1	29050	-	HB-5	
2000-'03		F-450, F-550 4X4	29060 - Non DRL; 29070 - DRL; 29070-1	29050	-	2B	
7164	2000-'03	F-650	29060 - Non DRL; 29070 - DRL; 29070-1	29053	29234	HB-5	
7172	2004-'07	F-650	29060 - Non DRL; 29070 - DRL; 29070-1	29053	29234	2B	
7173	2004 (Late)	F-250-550 SD 4X4	29060 - Non DRL; 29070 - DRL; 29070-1	29053	29235	HB-5	
		F-450, F-550 4X2	29060 - Non DRL; 29070 - DRL; 29070-1	29051	-	2B	
7174	2004 (Late) -'05	Excursion	29060 - Non DRL; 29070 - DRL; 29070-1	29050	-	HB-5	
7176	2004-'08	F-150 4X4	29060 - Non DRL; 29070 - DRL; 29070-1	29049	-	H13	
	2005-'07	F-250-550 SD 4X4	29060 - Non DRL; 29070 - DRL; 29070-1	29049	-	H13	
	2008-'11	F-350, F-450, F-550 4X2	29060 - Non DRL; 29070 - DRL; 29070-1	29051	-	2B	
		F-250-550 SD 4X4	29760-1 - W/WO DRL	29051	-	2B	
			29760-1 - W/WO DRL	29049	-	H13	
7187	2008-'10	F-650	29060 - Non DRL; 29070 - DRL; 29070-1	29053	29234	2B	
			29060 - Non DRL; 29070 - DRL; 29070-1	29053	29235	HB-5	
7188	2009-'10	F-150	29070-1	29049	-	H13	
1203	1998-'09	Ranger	29060 - Non DRL; 29070 - DRL; 29070-1	29050	-	HB-5	
	1996-'03	Explorer Sport 4X4	29060 - Non DRL; 29070 - DRL; 29070-1	29050	-	HB-5	Homesteader
	2001-'06	Explorer Sport Trac 4X4	29060 - Non DRL; 29070 - DRL; 29070-1	29050	-	HB-5	Homesteader
	1995-'01	Explorer		29050	-	HB-5	Homesteader
	1999-'02	Mazda 4X4 B3000					
	1999-'09	Mazda 4X4 B4000					
1213-1	2002-'03	Explorer 4X4	29060 - Non DRL; 29070 - DRL; 29070-1	29048	28027-2	HB-3/HB-4	Homesteader
			29060 - Non DRL; 29070 - DRL; 29070-1	29050	-	HB-5	Homesteader
1223	1997-'04	F-150 (Heritage)/Expedition 4X4	29060 - Non DRL; 29070 - DRL; 29070-1	29050	-	HB-5	Homesteader
1233	2004-'08	F-150 4X4	29060 - Non DRL; 29070 - DRL; 29070-1	29049	-	H13	Homesteader
31243	2007-'09	Explorer Sport Trac 4X4	29060 - Non DRL; 29070 - DRL; 29070-1	29049	-	H13	Homesteader
31253	2009-'10	F-150 4X4	29060 - Non DRL; 29070 - DRL; 29070-1	29049	-	H13	Homesteader
31263	2010	Ranger	29070-1	29050	-	HB5	Homesteader Only

FISHER® Snowplows – Quick Ordering Guide

Peculiar Components

Mount Part #	Year(s)	Vehicle Models	3-Port Module	3-Port Harness Kit	Harness Adapter	Headlamp Style	Relay Harness
GM							
7125	1988-'00	K2500/3500/Sub 2500 4X4	29060 - Non DRL; 29070 - DRL; 29070-1	29048	-	HB-3/HB-4	
			29060 - Non DRL; 29070 - DRL; 29070-1	29051	-	2B	
7129	1973-'87	K1500, 2500,3500 4X4	29060 - Non DRL; 29070 - DRL; 29070-1	29051	-	2B	
	1973-'91	Blazer, Suburban 4X4	29060 - Non DRL; 29070 - DRL; 29070-1	29050	26641-1	1A/2A	
7138	1988-'00	K1500/Sub/Blazer 4X4	29060 - Non DRL; 29070 - DRL; 29070-1	29048	-	HB-3/HB-4	
	1991-'01	C3500 2WD	29060 - Non DRL; 29070 - DRL; 29070-1	29051	-	2B	
7144	1991-'01	C3500 2WD	29060 - Non DRL; 29070 - DRL; 29070-1	29048	-	HB-3/HB-4	
7160	1999-'02	K1500 4X4	29060 - Non DRL; 29070 - DRL; 29070-1	29051	-	2B	
	1999-'06	Tahoe, Yukon, Suburban	29060 - Non DRL; 29070 - DRL; 29070-1	29048	-	HB-3/HB-4	
7161	1999-'02	K2500/K3500 4X4	29060 - Non DRL; 29070 - DRL; 29070-1	29051	-	2B	
	1999-'06	3/4-Ton Yukon XL, Suburban	29060 - Non DRL; 29070 - DRL; 29070-1	29048	-	HB-3/HB-4	
7168	2003-'07	K1500/K1500 "Classic" 4X4	29060 - Non DRL; 29070 - DRL; 29070-1	29051	-	2B	
7169	2003-'07	K2500/K3500 4X4	29060 - Non DRL; 29070 - DRL; 29070-1	29048	-	HB-3/HB-4	
	2007-'10	K2500/K3500 4X4	29060 - Non DRL; 29070 - DRL; 29070-1	29400-2	-	HB-3/HB-11	
7171	2003-'09	C4500/5500 4X4	29060 - Non DRL; 29070 - DRL; 29070-1	29053	-	2B/1A/2A	
7175	2004-'05	Canyon/Colorado 4X4	29060 - Non DRL; 29070 - DRL; 29070-1	29048	-	HB-3/HB-4	
7177	2005-'09	C4500/5500 4X4	29060 - Non DRL; 29070 - DRL; 29070-1	29053	-	2B/1A/2A	
7182	2007-'10	K1500 "All New"	29060 - Non DRL; 29070 - DRL; 29070-1	29400-2	-	HB-3/H11	
7192	2010	2500/3500	29070-1	29400-2	-	HB3/H11	
1503	1995-'04	S-10/Blazer 4X4	29060 - Non DRL; 29070 - DRL; 29070-1	29048	-	HB-3/HB-4	Homesteader™
		GMC Sonoma	29060 - Non DRL; 29070 - DRL; 29070-1	29051	27968-1	2E	Homesteader
1523	1999-'07	K1500/K1500 "Classic" 4X4	29060 - Non DRL; 29070 - DRL; 29070-1	29048	-	HB-3/HB-4	Homesteader
	2000-'06	Tahoe/Yukon 4X4	29060 - Non DRL; 29070 - DRL; 29070-1	29048	-	HB-3/HB-4	Homesteader
1533-1	2002-'09	Envoy/Trailblazer 4X4	29060 - Non DRL; 29070 - DRL; 29070-1	29052	-	HB-3/HB-4	Homesteader
31543-1	2004-'10	Canyon/Colorado 4X4	29060 - Non DRL; 29070 - DRL; 29070-1	29048	-	HB-3/HB-4	Homesteader
31533	2007-'10	Not for Z71 Off-Road Model K1500 "All New" 4X4 Tahoe, Yukon, XL, Suburban	29060 - Non DRL; 29070 - DRL; 29070-1	29400-2	-	HB-3/H11	Homesteader
Sterling							
7186	2008-'09	Bullet 45/55 4X4, 4X2	29060 - Non DRL; 29070 - DRL; 29070-1	29049	-	H13	

FISHER® Snowplows – Quick Ordering Guide Accessories

Blade Series/ Part No.	SnoFoil	Steel Deflector	Rubber Deflector	3/8" C.E.	1/2" C.E.	Disc Shoe Kit	Wear/Curb Shoe Kit	Curb Guards	Backdrag Edge	Wing Kit	Wing Stops
Homesteader™ Personal Plow											
27547 – 6'-8"				27713 (#)		27710 (##)					
27549 – 7' - 4"				22714 (#)		22710 (##)					
HT Series™ Snowplow											
69400 – 7'-6"	69660		69605	5532	50678	27880		44405			
SD Series											
28069 – 6'-9"		22269				27880					
27775 – 7'-6"		283	22470-1	5532		27880		44405			
HD Series											
27500 – 7'-6"	27100	283	22470-1	5532	50678			44405			
28000 – 8'	27100	26480	22470-1		5533			44405			
28500 – 8'-6"	27100	26485	22470-1		26460			44405			
29000 – 9'	27100	26490	22470-1		5534			44406			
XBLADE™ – Poly											
29618-1 – 8'			27600-1		27580		27222	44406			
29619-1 – 9'			27600-1		27590		27222	44406			
XBLADE – Stainless											
27510-1 – 7'6"			27600-1		28575		27222	44406			
28100-1 – 8'			27600-1		27580		27222	44406			
28510-1 – 8'-6"			27600-1		27585		27222	44406			
29100-1 – 9'			27600-1		27590		27222	44406			
XtremeV™ – Yellow PC											
44675-1 – 7' 6"			44710	44740-1 (*)	44742-1 (**)	50700 (\$)		44406	44281-2 (\$\$)		44473
44685-1 – 8'-6"			44710	44741-1 (*)	44743-1 (**)	50700 (\$)		44406	44282-2 (\$\$)	44610-1	44473
44695-1 – 9'-6"			44710		44744-1 (*)	50700 (\$)		44406	44283-2 (\$\$)	44610-1	44473
XtremeV – Stainless											
44775-1 – 7'-6"			44710	44740-1 (*)	44742-1 (**)	50700 (\$)		44406	44281-2 (\$\$)		44473
44785-1 – 8'-6"			44710	44741-1 (*)	44743-1 (**)	50700 (\$)		44406	44282-2 (\$\$)	44610-1	44473
44795-1 – 9'-6"			44710		44744-1 (*)	50700 (\$)		44406	44283-2 (\$\$)	44610-1	44473
XLS™ Snowplow											
50810 – 8'-10"			50628		50678						
MC Series											
29250 – 9'	22380	26490	22390		27362 (*)						
29350 – 10'	22200		22390		27239 (*)						

(#) Homesteader cutting edges come standard on product. Standard and service edges are actually 1/4" in thickness.

(##) Homesteader accessory shoe kit built from UHMW polymer material.

(*) Comes standard with blade.

(**) Comes standard with 3/8"; 1/2" available for after the sale service usage.

(\$) Not compatible with back drag edge accessory.

(\$\$) Not compatible with shoe kit accessory.

FISHER® Snowplows – Quick Ordering Guide Common Components

Blade Series/Part No.	Headgear Kit Off-Truck Kit	A-Frame Kit	Hydraulic Box	Control(s)	Headlamp Kit
Homesteader™ Personal Plow					
27547 – 6'-8"	27550	N/A	27517-1	8292 – Joystick 9400 – Hand-held	8435
27549 – 7' - 4"					
HT Series™ Snowplow					
69400 – 7'-6"	69450	N/A	N/A	49700 – Joystick 49800 – Hand-held	N/A
Standard Duty Series					
28069 – 6'-9"	27750-1	N/A	9825-1	8292 – Joystick 9400 – Hand-held	28800
27775 – 7'-6"					
Heavy Duty Series					
27500 – 7'-6"					
28000 – 8'	27777	N/A	9840-2	8292 – Joystick 9400 – Hand-held	28800
28500 – 8'-6"					
29000 – 9'					
XBLADE™ – Poly					
29618-1 – 8'	27777	N/A	9840-2	8292 – Joystick 9400 – Hand-held	28800
29619-1 – 9'					
XBLADE – Stainless					
27510-1 – 7'6"	28900	N/A	9840-2	8292 – Joystick 9400 – Hand-held	28800
28100-1 – 8'					
28510-1 – 8'-6"					
29100-1 – 9'					
XtremeV™ – Yellow PC					
44675-1 – 7' 6"	44600-1	N/A	N/A	49900 – Joystick 29800 – Hand-held	N/A
44685-1 – 8'-6"					
44695-1 – 9'-6"					
XtremeV – Stainless					
44775-1 – 7'-6"	44650-1	N/A	N/A	49900 – Joystick 29800 – Hand-held	N/A
44785-1 – 8'-6"					
44795-1 – 9'-6"					
XLS™ Snowplow					
50810 – 8'-10"	50600	N/A	N/A	49900 – Joystick 29800 – Hand-held	N/A
Municipal/Commercial Series					
29250 – 9'	29999	28665	9835-1	8292 – Joystick 9400 – Hand-held	28800
29350 – 10'					

Current Vehicle & Snowplow Wiring	Parts Needed to Run a DIFFERENT Blade on the SAME Vehicle*		
	New Straight Blade	New EZ-V® Blade	New HT Series™, XtremeV™ & XLS™ Blade
•Original MM Wiring (7-, 9- or 12-Pin) •2-Plug System (EZ-V & Straight Blade)	N/A	N/A	N/A
•Original E-Force (4-Port Module) or E-Force 2 (3-Port Module) Wiring •3-Plug System (Straight Blade)	No Change	• 26346 • 56496 • Control	• 42014 • 28587 • 29175 (4-Port only)
•Original E-Force (4-Port Module) or E-Force 2 (3-Port Module) Wiring •3-Plug System (EZ-V Blade)	• 21792K • Control	No Change	• 42014 • 28587 • 29175 (4-Port only)
•Original E-Force (4-Port Module) or E-Force 2 (3-Port Module) Wiring •2-Plug System (XtremeV & XLS Blade)	• 26705-1 • Control	• 26705-1 • Control	No Change

* does not include parts that can be reused (e.g., configuration plug/dust cover) or parts that require repair (e.g., corroded harness ends)

Current Vehicle & Snowplow Wiring	Parts Needed to Run the SAME Blade on a DIFFERENT Vehicle	
	Original E-Force Wiring (4-Port Module)	E-Force 2 Wiring (3-Port Module)
• Original MM Wiring (7-, 9- or 12-Pin) • 2-Plug System (Straight & EZ-V® Blade)	N/A	N/A
• Original E-Force (4-Port Module) or E-Force 2 (3-Port Module) Wiring • 3-Plug System (Straight & EZ-V Blade)	• 26705-1 • Plug-In (Peculiar Light) Harness Kit • Plug-In (Peculiar Light) Adapter, if applicable	• 26705-1 • Plug-In (Peculiar Light) Harness Kit • Plug-In (Peculiar Light) Adapter, if applicable • 3-Port Isolation Module
• Original E-Force (4-Port Module) or E-Force 2 (3-Port Module) Wiring • 2-Plug System (XtremeV™, HT Series™ & XLS™)	• 42014 • 28587 • 29175 • Plug-In (Peculiar Light) Harness Kit • Plug-In (Peculiar Light) Adapter, if applicable	• 42014 • 28587 • Plug-In (Peculiar Light) Harness Kit • Plug-In (Peculiar Light) Adapter, if applicable • 3-Port Isolation Module

* does not include parts that can be reused (e.g., configuration plug/dust cover) or parts that require repair (e.g., corroded harness ends)

Part Number Key		
Part	Description	Use
21792K	Control Adapter Cable	Allows use of straight blade control on truck wired for EZ-V blade
26346	7-Pin Vehicle Control Harness	Control harness for EZ-V blade
26498	Vehicle Control Harness	Activates module system on Central Hydraulic trucks
26705-1	On-Truck Control Wiring Kit	Contains on-truck harness and cables needed to run straight and EZ-V blades (Dash one ["-1"] kit includes the 29047 adapter)
28587	Vehicle Control Harness	Control harness for XtremeV and XLS blades
29047	Adapter	Allows use of 3-port module system with straight and EZ-V blades (Found in 26705-1 and all 3-port harness kits)
29175	Adapter	Allows use of 4-port module with XtremeV and XLS blades
42014	Vehicle Battery Cable	Battery cable for XtremeV and XLS blades
56496	EZ-V Control Connector Bag	Contains 14-pin connector needed to connect EZ-V controls

Common Adapters and Extension Harnesses

Part #	Description	Function
29458	HB-4 to H11 Connectors	Allows HE-3/HB-4 kits to be used on '07/'08 and newer GM & Toyota trucks.
28027-2	Inline Adapter Kit	This adapter is required for vehicles equipped with a 4-headlamp lighting system that illuminates the low <i>and</i> high beams when in high beam mode. This adapter prevents the low beams on the snowplow from illuminating when placed in high beam.
26640	10-Pin Extension Harness	100" extension harness for module wiring.
26641-1	1A/2A Adapter	These adapters allow the 8436 or 29050 kit to be used on vehicles equipped with 1A/2A lighting. (The 8436 must be configured for HB-5).
27968-1	2B to 2E Adapter Kit	These adapters allow the 8439 or 29051 kit to be used on vehicles equipped with 2E lighting.
28860-1	Mitsubishi Adapter	This adapter allows the 8436 or 29050 to be used on Mitsubishi trucks. The adapter converts the HB-5 connector to the 6-position connector used on Mitsubishi. (The 8436 must be configured for HB-5).
29234	5-Position Connector to 2B	This kit allows the 29053 kit to be used on International trucks and the F-650 that have a 2B headlamp connector.
29235	5-Position Connector to HB-5	This kit allows the 29053 peculiar light kit to be used on International trucks and the F-650 that have a HB-5 headlamp connector.
29056-1	Dodge Sport Adapter	This kit allows a 29050 peculiar light kit to be used on the 4-light Dodge sport trucks.
29033	H13 Headlamp Adapter	This adapter allows all 7-, 9-, 11- and 12-pin headlamps to be wired for the H13 INTENSIFIRE™ headlamps.
B62225-1	Adapter Kit H13-LF/UF	Allows the 29049 or 28400 peculiar light kit to be used on vehicles with LF/UF headlamps.
29175	4-Port XtremeV™ / XLS™ Adapter	Allows the XtremeV and XLS to be used with 4-port wiring system.
29047	Adapter for 3-Port	Allows the 10-pin connector of the vehicle control harness to connect to the 4-pin connector on the peculiar light harness on all non-multiplex applications.
21792K	14-Pin EZ-V® Connector to 6-Pin Straight Blade Molex Connector	This adapter allows you to plug in and operate a straight blade on an EZ-V wired truck.
21019K	Black 6-Pin to White 6-Pin Molex Connector	Allows the 8292 or 9400 control to be used as a replacement of the 7736 control.
26497	9-Pin Harness Rework Kit	Allows the 8416 kit to be used on Insta-Act® units. This kit lengthens the wiring to reach the hydraulic unit that is located on the PS of the headgear.
68508	4' Extension Harness	This is a 4' extension harness for the 7-pin spreader harness.
68523	4' Extension Harness	This is a 4' extension harness for the spreader 2-pin battery cable.
29420-1	Adapter Kit H13-HB3/H11	Allows the 29049 or 28400 peculiar light kit to be used on vehicles with H13-HB3/H11 headlamps.
26636	10-Pin Extension Harness	100" extension harness for module wiring.

Common Adapters and Extension Harnesses

Part #	Description	Function
8695K	4' Extension Harness	This is a 4' extension harness for the 6-pin Molex connector vehicle control harness.
29294-1	Adapter Kit	This adapter will allow you to test the 3-port module on the 26470-2 Isolation Module Tester. All 26470-1 and -2 kits already have this adapter included.
66460	4' Extension Harness – 11-Pin	This is a 4' extension harness for the 11-pin spreader harness.

Misc Adapters and Extension Brackets

Part #	Description	Function
29035	Headlamp Extension Bracket and Adapter Kit	This kit contains both the 28330 Headlamp Extension Bracket and the 29033 H13 wiring adapter for the INTENSIFIRE™ headlamps.
28330	Headlamp Extension Bracket (Extends to each side)	This bracket allows the use of the 2 post INTENSIFIRE headlamps on all conventional, MM1 and MM2 single headlamp post headgears.
29596	INTENSIFIRE Extension Bracket (Moves lights forward)	This bracket is needed in any application where the grille is part of the hood. It moves the headlamps forward for clearance between the back of the headlamps and the grille/hood.
40734	Extension Plate Kit	This kit allows the 31543 Homesteader™ mount for the Colorado/Canyon to be installed on the 2008 model year truck. There was an increase in vehicle height on the 2008 model year depending on the trim level. All 31543-1 kits contain this bracket.
29614	Adapter Kit – Ford Super Duty	This adapter kit allows the 7173 (Late 2004) to be converted into a 7159-2 kit to be used on all 1999-'04 Super Duty trucks.
26273	Dodge Sport Pkg Adapter Kit (Bracket)	Originally packed in the 8442 4-Port Kit for the 4-light Dodge Sport, this adapter kit helps pull the valance up and secure it to avoid interference with the plow when attaching or removing it from the vehicle. This kit should be used when installing the 29050 3-Port IM and 29056-1 kits on the 4-light Dodge Sport trucks.

Relay Harness Availability

Part Number	Availability Yes or No
-------------	---------------------------

GM

8264	Yes
8265	Yes
8267	Yes
8268	NO
8271	No
8272	Yes
8270	Yes
8421	No
8422	No
20710	Yes
26070	Yes

Ford

8264	Yes
8269	Yes
21511	Yes

Part Number	Availability Yes or No
-------------	---------------------------

Dodge

8270	Yes
8283	TBO
8903	Yes
26014	Yes
26026	Yes
26028	No
21748	No

Toyota and Misc

8265	Yes
8266	No
8420	Superseded by 20526 (w/DRLs) or 20527 (w/o DRLs)
20525	No
20526	No
20527	No
21331	Yes
22242	Yes

PUSHPLATE SERVICE PART AVAILABILITY

This chart is a list of non-current kits that are no longer sold as whole goods. Some of the kit components are still sold as service parts though. If the kit needed is no longer sold, refer to the chart below to see if the components are still offered as service parts.

Original Kit #	Pushplate Service Part #					Obsolete
Part Number	DS	PS	Spacer	Angle or Thrust Arm	Other	

General Motors

7119	8464	8465	8734			
7139	8894	8895				
7142	XXX	XXX	XXX	XXX	XXX	Yes
7146	XXX	XXX	XXX	XXX	XXX	Yes
7148	20604	20605		20615		
7154	XXX	XXX	XXX	XXX	XXX	Yes

Ford

7120	XXX	XXX	XXX	XXX	XXX	Yes
7123	8591	8592		8590	8098	
7131	9035	9036		5317 - 8661	6070 - 6071 - 6072	
7152-1	21621	21622	21679	21629 - 21630	21338	

Dodge

7124	8755	8756		8661		
7130	8710	8711				
7137				8878		Yes
7141	Superseded by 7157					
7149	Superseded by 7157					

Mitsubishi

7162-1	22449			26801-26802-26796		
--------	-------	--	--	-------------------	--	--

Nissan

7143	XXX	XXX	XXX	XXX	XXX	Yes
------	-----	-----	-----	-----	-----	-----

Toyota

7122	8340	8341		8353		
7147	XXX	XXX	XXX	XXX	XXX	Yes
7158	21991	21992	20579	8353 - 20576		



Fisher Engineering
50 Gordon Drive
Rockland, ME 04841-2139
www.fisherplows.com

 A SUBSIDIARY OF DOUGLAS DYNAMICS, L.L.C.

Copyright © 2010 Douglas Dynamics, L.L.C. All rights reserved. This material may not be reproduced or copied, in whole or in part, in any printed, mechanical, electronic, film or other distribution and storage media, without the written consent of Fisher Engineering. Authorization to photocopy items for internal or personal use by Fisher Engineering outlets or snowplow owner is granted.

Fisher Engineering reserves the right under its product improvement policy to change construction or design details and furnish equipment when so altered without reference to illustrations or specifications used. Fisher Engineering or the vehicle manufacturer may require or recommend optional equipment for snow removal. Do not exceed vehicle ratings with a snowplow. Fisher Engineering offers a limited warranty for all snowplows and accessories. See separately printed page for this important information. The following are registered (®) or unregistered (™) trademarks of Douglas Dynamics, L.L.C.: EZ-V®, FISHER®, Fish-Stik®, Homesteader™, HT Series™, Insta-Act®, INTENSIFIRE™, Minute Mount®, Minute Mount® 2, XBLADE™, XLS™, XtremeV™.

Printed in U.S.A.