



MUNCIE

H SERIES

GEAR PUMP WITH INTEGRAL PRIORITY FLOW CONTROL

Muncie's standard "H" Series gear pumps are now offered with priority flow control capabilities that are great for use on steering applications.



The "H" series utilizes a 3 port design; 1 inlet, a controlled flow port and a bypass/excess flow port. The internal flow control spool provides the desired amount of flow to the primary application via the controlled flow port regardless of pump speed or load demand changes.

Excess flow is routed out the bypass port for use with an additional application, or back to tank. The integral pressure relief is built in for constant system protection, unloading controlled flow back to the pump inlet if pressure ratings are exceeded.

APPLICATIONS

**STEERING CONTROLS • AERIAL LIFT
• FORKLIFT/TRUCK**

FEATURES & BENEFITS

- Integral flow control spool built into rear cover
- Built-in relief valve adjustable from 100-3500 psi
- 18 pre-selected priority flows from 2-12 gpm
- Pump displacements from 3-11 gpm @ 1000 rpm
- Pressures up to 3500 psi & speeds up to 4000 rpm
- Bushing style construction for long life

H SERIES MODEL NUMBER CONSTRUCTION

P H 1 - 07 - 02 B S S L 15 D

PUMP: P

SERIES: H

DESIGN NO.: 1

GPM (LPM) @ 1000 RPM (Ref)

03(11), 05(19), 07(26), 08(30), 09(34), 11(42)

SHAFT SIZE & TYPE

02 – SAE “B” 7/8-13T spline

MOUNTING FLANGE TYPE

A – SAE “A” 2-BOLT, 3.25” PILOT DIA.

B – SAE “B” 2-BOLT, 4.00” PILOT DIA.

PORT TYPE

S – SAE Straight Thread (ODT)

PORT LOCATION

S – Side Ports

PRIORITY FLOW CONTROL, GPM (LPM)

A – 2.00 (7.5)	J – 7.00 (26.5)
B – 3.00 (11.4)	K – 7.50 (28.4)
C – 3.50 (13.2)	L – 8.00 (30.3)
D – 4.00 (15.1) *	M – 8.50 (32.2)
E – 4.50 (17.0)	N – 9.00 (34.1)
F – 5.00 (18.9)	O – 9.50 (34.1)
G – 5.50 (20.8)	P – 10.00 (37.9)
H – 6.00 (22.7)	Q – 11.00 (41.6)
I – 6.50 (24.6)	R – 12.00 (45.4)

RELIEF VALVE PRESET

15 – 1500 PSI (100 BAR) *

ROTATION

L – CW
R – CCW

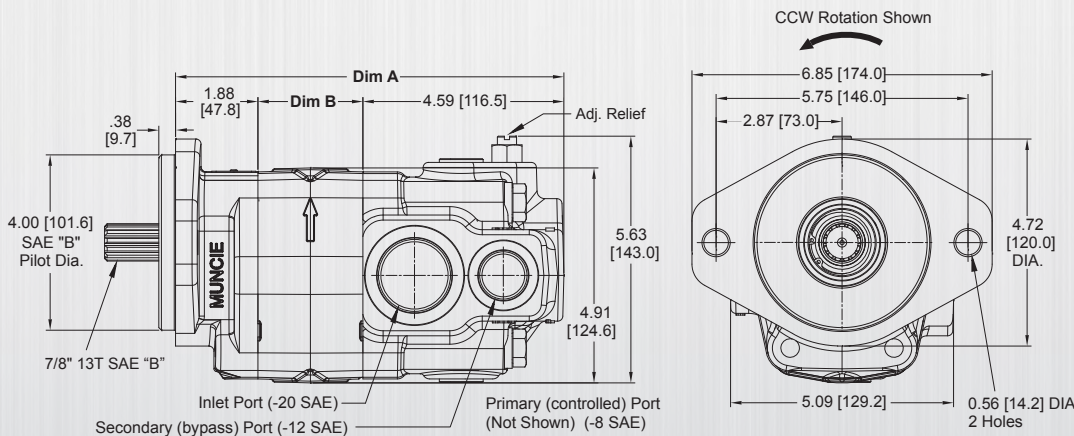
* Standard setting

PH1 PUMP SPECIFICATIONS

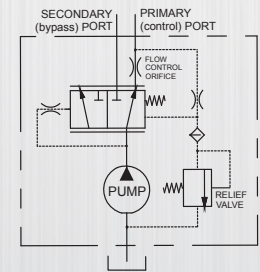
Model Number	Displ. in3(cc)	Max RPM	Min RPM	Max Press. PSI (BAR)	DIM A	DIM B	Max Oil Temp	Max Inlet Vacuum	Apprx. Wt. lbs. (Kg)
PH1-03	0.62 (10.2)	4000	1000	3500 (241)	7.37 [187.20]	0.90 [22.9]	200°F (93°C)	5in.Hg. (0.17BAR)	29.2 (13.2)
PH1-05	1.24 (20.3)	4000	800	3500 (241)	7.87 [199.90]	1.40 [35.6]	200°F (93°C)	5in.Hg. (0.17BAR)	31.0 (14.1)
PH1-07	1.55 (25.4)	3600	800	3500 (241)	8.12 [206.25]	1.65 [41.9]	200°F (93°C)	5in.Hg. (0.17BAR)	31.8 (14.4)
PH1-08	1.86 (30.5)	3600	800	3250 (224)	8.37 [212.60]	1.90 [48.2]	200°F (93°C)	5in.Hg. (0.17BAR)	32.6 (14.8)
PH1-09	2.17 (35.6)	3000	800	2900 (200)	8.62 [218.95]	2.15 [54.6]	200°F (93°C)	5in.Hg. (0.17BAR)	33.9 (15.4)
PH1-11	2.48 (40.6)	3000	800	2500 (172)	8.86 [225.04]	2.40 [61.0]	200°F (93°C)	5in.Hg. (0.17BAR)	34.8 (15.8)

Note: Care must be made in selecting the proper pump size vs. the priority flow setting to prevent hydraulic energy loss and added heat load to the system.

H SERIES DIMENSIONAL DATA INCHES (MM)



PRIORITY FLOW CONTROL REAR COVER SCHEMATIC



NOTE: SAE "B" pilot shown. SAE "A" pilot diameter is 3.25 [82.5], with two 0.44 [11.2] diameter holes on a 4.19 [106.4] bolt circle.



Muncie Power Products, Inc. Member of the Interpump Hydraulics Group
General Offices and Distribution Center • P.O. Box 548 • Muncie, IN 47308-0548
(765) 284-7721 • FAX (765) 284-6991 • E-mail info@munciepower.com
Web site <http://www.munciepower.com>

Drive Products, Exclusive Agents for Canada, ISO Certified by an Accredited Registrar

