



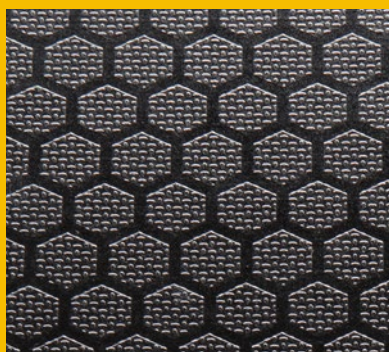
FLOORS

Impact and puncture resistant floors preserve the cargo van interior



EFFICIENCY

Incorporated mounting tracks for most Ranger Design products.



PROTECTION

Rigid floor covering protects cargo van floors from impact damage and scratches.



SAFETY

Extruded aluminum joints where floor pieces meet.

FLOORS

CHEVROLET

EXPRESSP. 24

FORD

TRANSIT P. 24

TRANSIT CONNECT P. 25

GMC

SAVANA P. 25

MERCEDES-BENZ

SPRINTER. P. 25

NISSAN

NV. P. 26

NV200. P. 26

RAM

PROMASTER P. 26

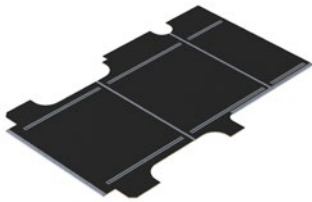
PROMASTER CITY P. 26

- › Easy to install with integrated mounting tracks
- › Compatible with Ranger Design's shelving packages
- › Custom fit for almost all vans
- › Includes aluminum sills at the side and rear doors
- › No thermal expansion
- › Much safer due to load distribution
- › Quieter ride – reduces noise for the cargo area
- › 3 year warranty

IT'S MORE
THAN A
FLOOR!



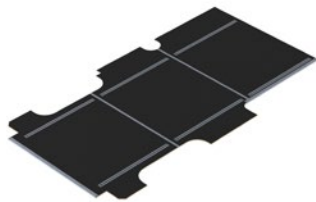
CHEVROLET
EXPRESS



6540-GSR

Chevrolet Express Floor

Marine-Grade Plywood	
135"	
74 lbs	
1 hr	
Yes	



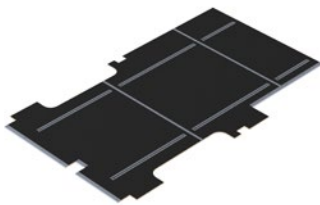
6540-GSX

Chevrolet Express Floor

Marine-Grade Plywood	
155" Ext.	
89 lbs	
1 hr	
Yes	



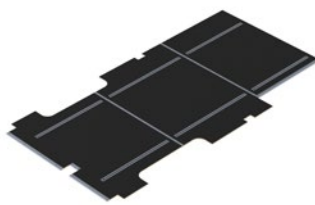
FORD
TRANSIT



6540-FTS

Ford Transit Floor

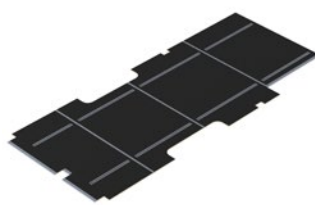
Marine-Grade Plywood	
130"	
70 lbs	
1 hr	
Yes	



6540-FTL

Ford Transit Floor

Marine-Grade Plywood	
148"	
88 lbs	
1 hr	
Yes	



6540-FTX

Ford Transit Floor

Marine-Grade Plywood	
148" Ext.	
109 lbs	
1.3 hrs	
Yes	





FORD TRANSIT CONNECT ▶



6540-FCS

Ford Transit Connect Floor

Marine-Grade Plywood

🚐 105"

📦 33 lbs

🕒 0.7 hr

🏆 Yes



6540-FCL

Ford Transit Connect Floor

Marine-Grade Plywood

🚐 120.5"

📦 42 lbs

🕒 0.7 hr

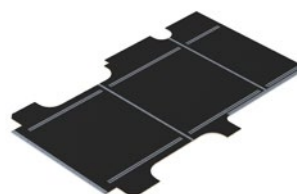
🏆 Yes

Impact
and puncture
resistant floors
preserve the cargo
van interior

Incorporated
mounting tracks
means easy install
for most Ranger
Design products.



GMC SAVANA ▶



6540-GSR

GMC Savana Floor

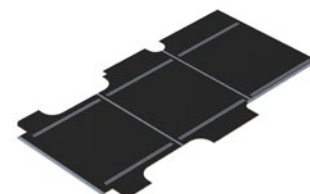
Marine-Grade Plywood

🚐 135"

📦 74 lbs

🕒 1 hr

🏆 Yes



6540-GSX

GMC Savana Floor

Marine-Grade Plywood

🚐 155"

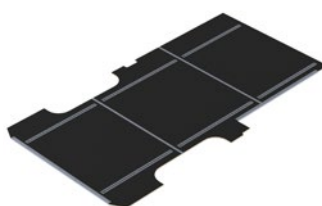
📦 89 lbs

🕒 1 hr

🏆 Yes



MERCEDES-BENZ SPRINTER ▶



6540-DR

Mercedes-Benz Sprinter Floor

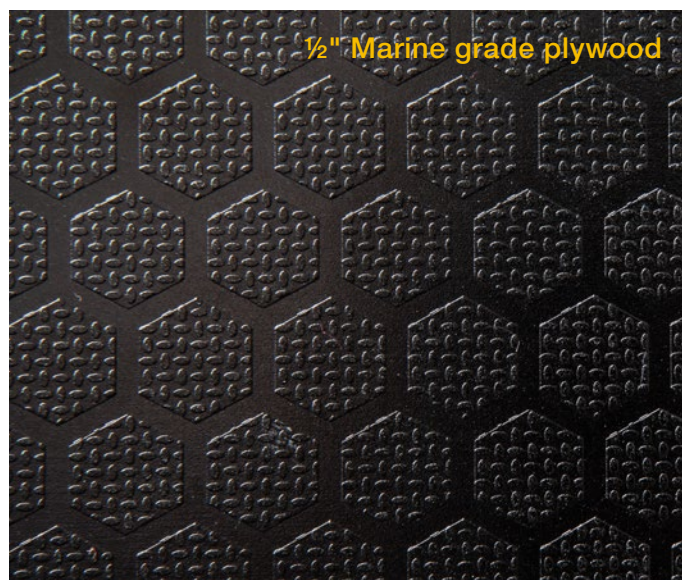
Marine-Grade Plywood

🚐 144"

📦 86 lbs

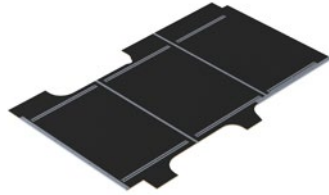
🕒 1 hr

🏆 Yes



FLOORS

FLOORS



6540-NV

Nissan NV Floor

Marine-Grade Plywood

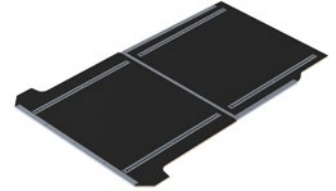
146"

73 lbs

1 hr

Yes

NISSAN
NV



6540-NS

Nissan NV200 Floor

Marine-Grade Plywood

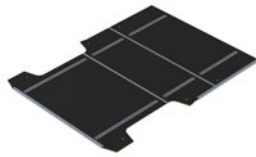
115"

43 lbs

1 hr

Yes

NISSAN
NV200



6540-PS

RAM ProMaster Floor

Marine-Grade Plywood

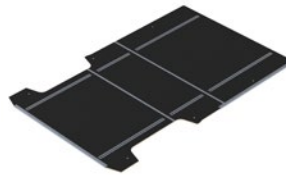
118"

71 lbs

1 hr

Yes

RAM
PROMASTER



6540-PM

RAM ProMaster Floor

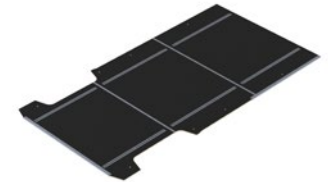
Marine-Grade Plywood

136"

83 lbs

1 hr

Yes



6540-PL

RAM ProMaster Floor

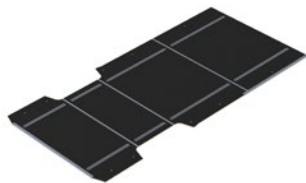
Marine-Grade Plywood

159"

100 lbs

1 hr

Yes



6540-PX

RAM ProMaster Floor

Marine-Grade Plywood

159" Ext.

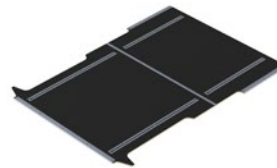
112 lbs

1.3 hrs

Yes



RAM
PROMASTER CITY



6540-PC

RAM ProMaster City Floor

Marine-Grade Plywood

122"

46 lbs

0.7 hr

Yes



Safer due to the integrated track, improved load distribution and noise reduction.

IT'S MORE THAN A FLOOR

Ranger Design's unique flooring system with integrated aluminum mounting tracks provides a flush surface, making it easy to install a variety of Ranger Design shelving, equipment and accessories.

Ranger Design's custom-fit rigid flooring system is available for most service vans. Designed to provide added safety and a quieter ride. The floors are also impact and puncture resistant giving your van a professional look. Unique benefits of these flooring products include:

- **Economical** – because the flooring has integrated mounting tracks for the price of a regular floor
- **Safer** – due to the integrated track, improved load distribution and noise reduction
- **Improved van resale value** – durable professional looking and protects the vehicle
- **Efficient** – 3 panel floor installed in 45 minutes by one person and easy to maintain

